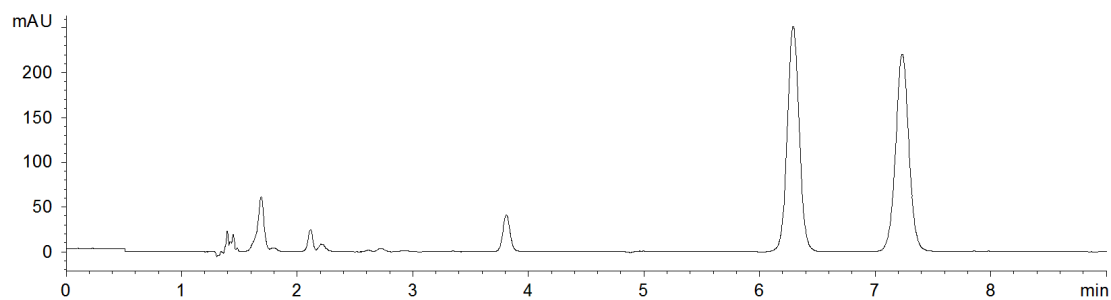


18210



Column: [Lux 5 \$\mu\$ m Cellulose-2 LC Column 250 x 4.6 mm](#)

Part No:00G-4457-E0

Dimensions:250 x 4.6 mm ID

Elution Type:Isocratic

Elution A:0.1% DEA+0.1% TFA in methanol

Elution B:CO₂

Gradient Profile:

Step No.	Time (min)	Pct A	Pct B
1	0	15	85

Flow Rate:2 mL/min

Col. Temp: 40 °C

Detection: UV-Vis Abs.-Variable Wave.(UV) @ 254 nm (22°C)

Compounds:

1- Benzoin