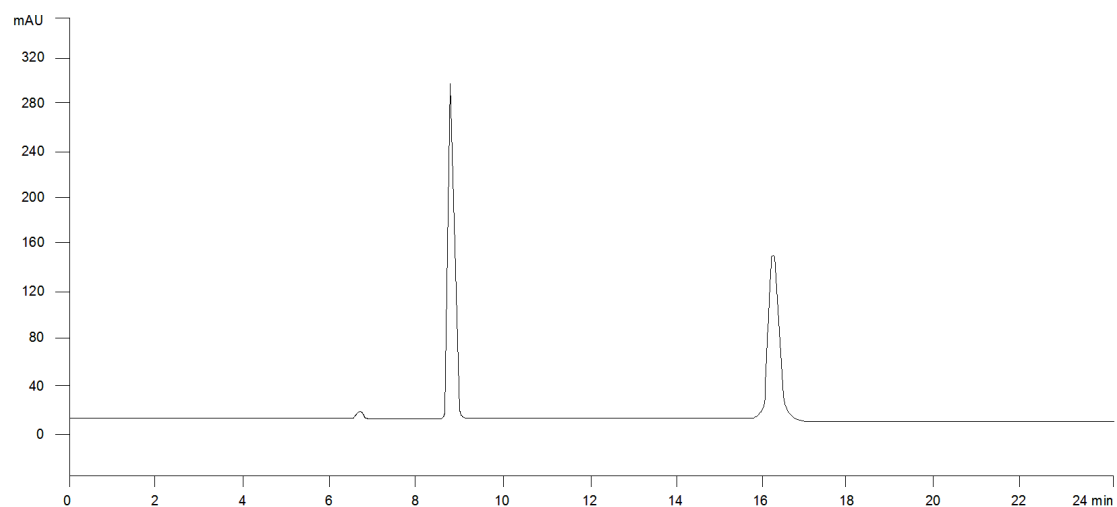


18214



**Column:** [Lux 5  \$\mu\$ m Cellulose-2 LC Column 250 x 4.6 mm](#)

**Part No:** [00G-4457-E0](#)

**Dimensions:** 250 x 4.6 mm ID

**Elution Type:** Isocratic

**Elution A:** Hexane

**Elution B:** IPA

**Gradient Profile:**

Step No.	Time (min)	Pct A	Pct B
1	0	90	10

**Flow Rate:** 0.5 mL/min

**Col. Temp:** ambient

**Detection:** UV-Vis Abs.-Variable Wave.(UV) @ 220 nm (22°C)

**Compounds:**

1- trans-Stilbene oxide