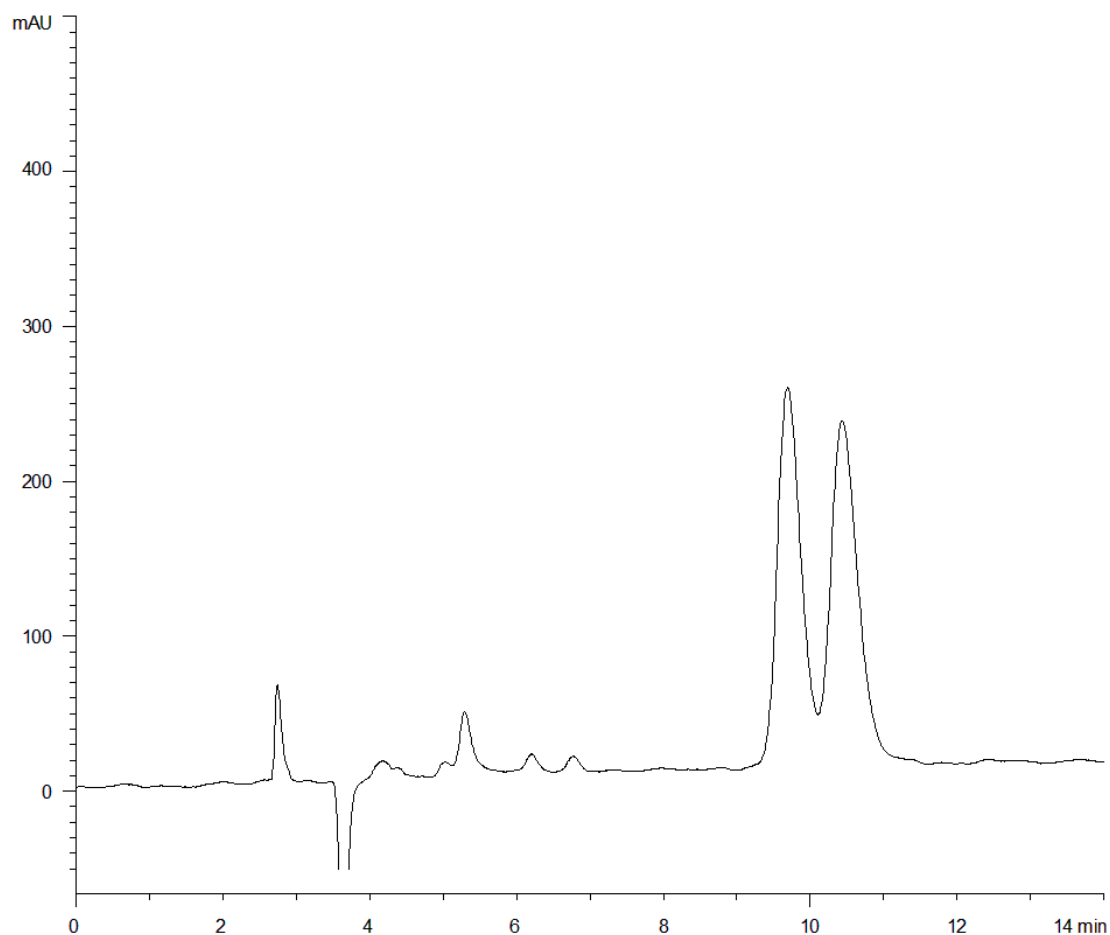


18219



Column: [Lux 5u Cellulose-1, LC Column 250 x 4.6 mm, Ea](#)

Part No: [00G-4459-E0](#)

Dimensions: 250 x 4.6 mm ID

Elution Type: Isocratic

Elution A: 0.1 % DEA in Hexane

Elution B: 0.1% DEA in IPA

Gradient Profile:

| Step No. | Time (min) | Pct A | Pct B |
|----------|------------|-------|-------|
| 1 | 20 | 90 | 10 |

Flow Rate: 1 mL/min

Col. Temp: 40 °C

Detection: UV-Vis Abs.-Variable Wave.(UV) @ 220 nm (22°C)

Compounds:

1- Nisoldipine

2- Nisoldipine