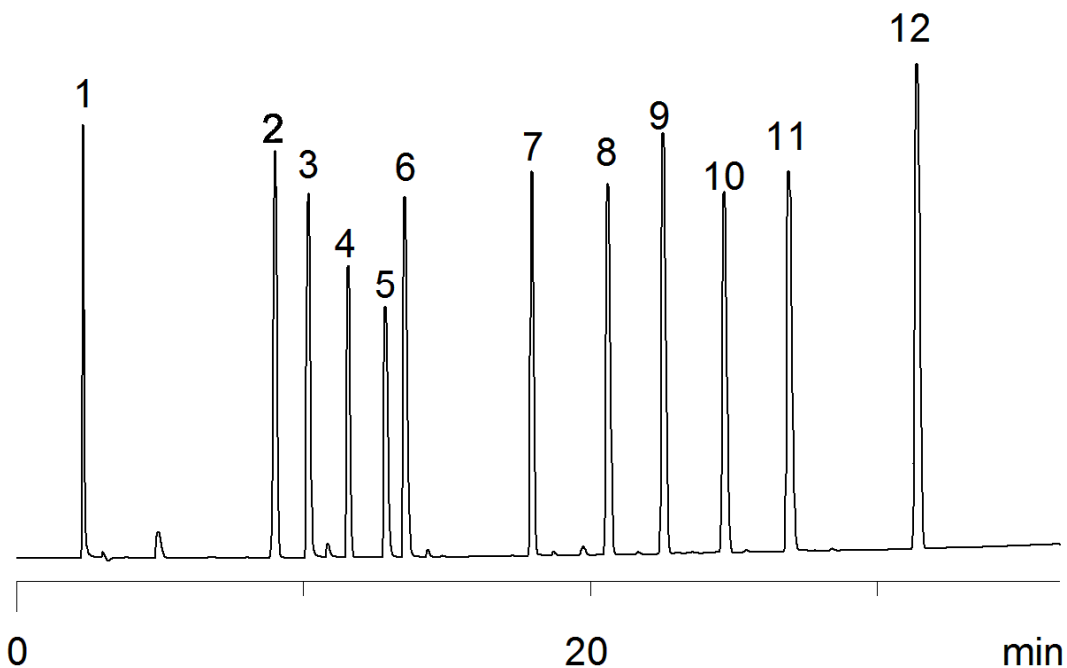


18230



Column: [Luna® 5 µm C18\(2\) 100 Å LC Column 250 x 4.6 mm](#)

Part No: [00G-4252-E0](#)

Dimensions: 250 x 4.6 mm ID

Elution Type: Gradient

Elution A: water w/ 0.1% formic acid

Elution B: acetonitrile w/ 0.1% formic acid

Gradient Profile:

Step No.	Time (min)	Pct A	Pct B
1	0	95	5
2	2.79	95	5
3	36.15	5	95
4	36.38	95	5
5	50.93	95	5

Flow Rate: 1 mL/min

Col. Temp: 45 °C

Detection: UV-Vis Abs.-Variable Wave.(UV) @ 254 nm (25°C)

Compounds:

- 1- pyridine
- 2- acetaminophen
- 3- quinine
- 4- acebutolol
- 5- chlorpheniramine
- 6- triprolidine
- 7- prednisolone
- 8- 4-chlorobenzoic acid
- 9- 4-chlorocinnamic acid
- 10- diazepam
- 11- diflunisal
- 12- hexanophenone