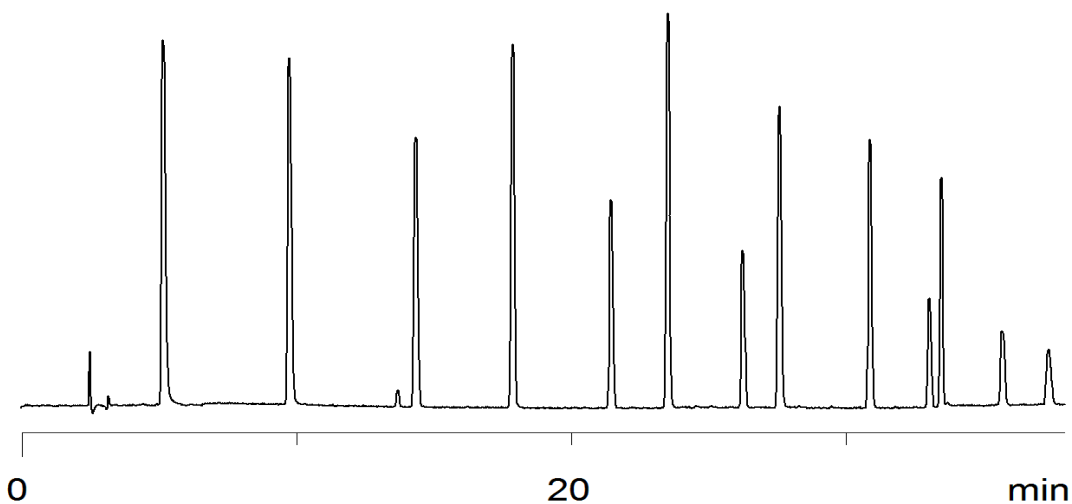


18279



Column: [Luna® 5 µm C18\(2\) 100 Å LC Column 150 x 4.6 mm](#)

Part No: [00F-4252-E0](#)

Dimensions: 150 x 4.6 mm ID

Elution Type: Gradient

Elution A: water

Elution B: acetonitrile

Gradient Profile:

Step No.	Time (min)	Pct A	Pct B
1	0	95	5
2	2.81	95	5
3	30.85	5	95
4	38	5	95
5	38.01	95	5
6	50.22	95	5

Flow Rate: 0.714 mL/min

Col. Temp: 45 °C

Detection: UV-Vis Abs.-Diode Array (PDA) @ 258 nm (25°C)

Compounds:

- 1- Acetone
- 2- 2-Butanone
- 3- 2-Pentanone
- 4- Acetophenone
- 5- 2-Heptanone
- 6- Butyrophenone
- 7- 2-Nonanone
- 8- Hexanophenone
- 9- Octanophenone
- 10- 2-Tridecanone
- 11- Decanophenone
- 12- 2-Pentadecanone
- 13- 2-Hexadecanone