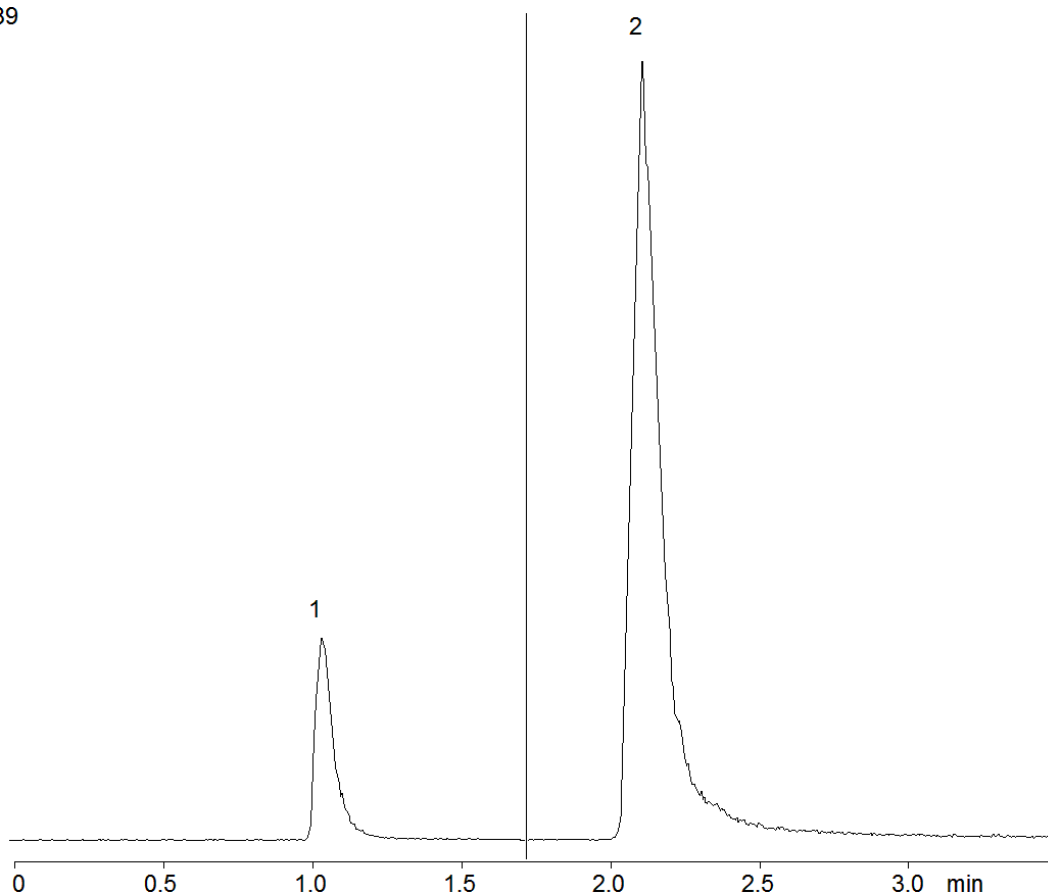


18289



Column: [Luna® 3 µm HILIC 200 Å, LC Column 100 x 2 mm, Ea](#)

Part No: [00D-4449-B0](#)

Dimensions: 100 x 2 mm ID

Elution Type: Isocratic

Elution A: 90/10- ACN/100 mM ammonium formate, pH 3.2

Gradient Profile:

Step No.	Time (min)	Pct A
1	0	100

Flow Rate: 0.4 mL/min

Col. Temp: ambient

Detection: Mass Spectrometer (MS) @ (22°C)

Compounds:

- 1- Cyanuric acid
- 2- Melamine