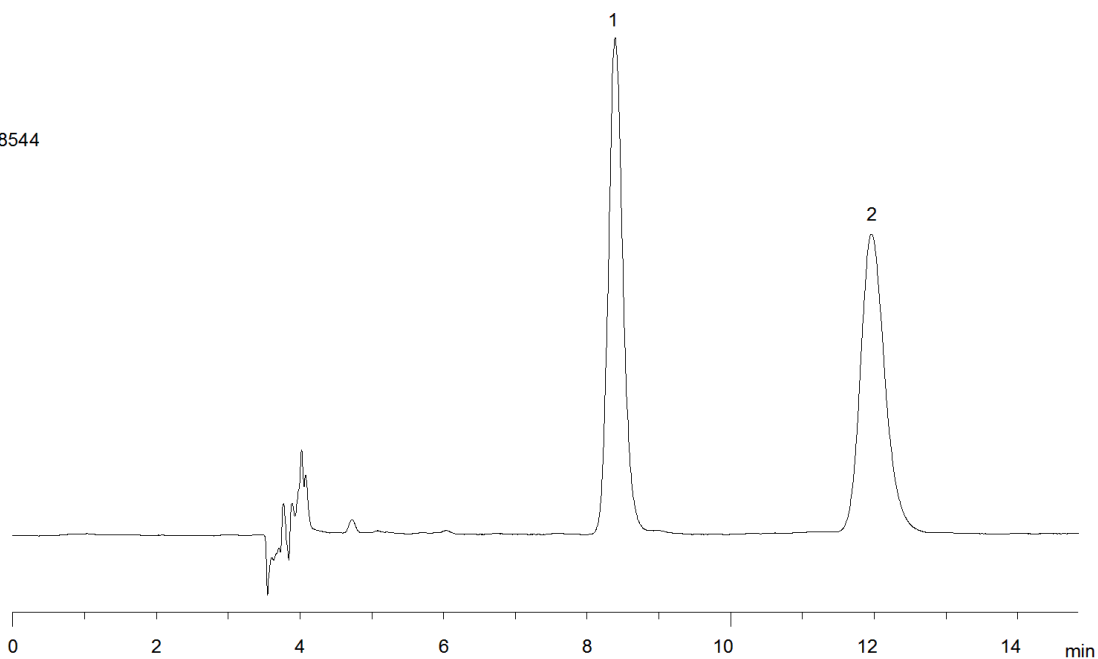


18544



Column: [Lux 5 \$\mu\$ m Cellulose-1 LC Column 250 x 4.6 mm](#)

Part No: [00G-4459-E0](#)

Dimensions: 250 x 4.6 mm ID

Elution Type: Isocratic

Elution A: MeOH

Elution B: 20mM NH_4HCO_3 + 0.1% DEA

Gradient Profile:

Step No.	Time (min)	Pct A	Pct B
1	10	80	20

Flow Rate: 1 mL/min

Col. Temp: ambient

Detection: UV-Vis Abs.-Variable Wave.(UV) @ 220 nm (22°C)

Compounds:

- 1- Ambucetamide
- 2- Ambucetamide