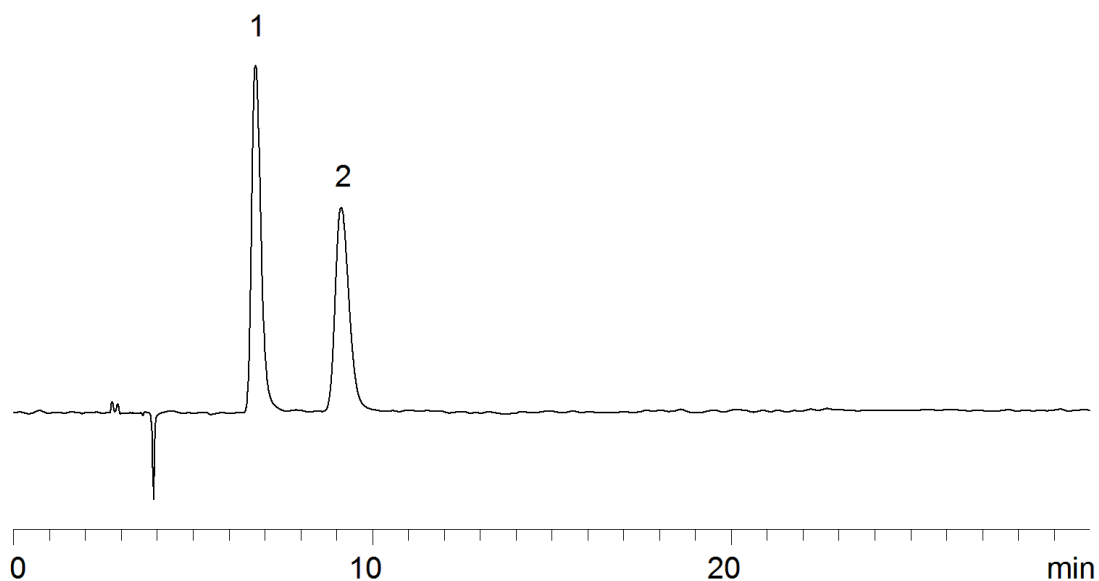


18726



**Column:** [Lux 5  \$\mu\$ m Cellulose-2 LC Column 250 x 4.6 mm](#)

**Part No:** [00G-4457-E0](#)

**Dimensions:** 250 x 4.6 mm ID

**Elution Type:** Isocratic

**Elution A:** 0.1% Formic acid in Hexane

**Elution B:** 0.1% Formic acid in IPA

**Gradient Profile:**

Step No.	Time (min)	Pct A	Pct B
1	15	80	20

**Flow Rate:** 1 mL/min

**Col. Temp:** ambient

**Detection:** UV-Vis Abs.-Variable Wave.(UV) @ 254 nm (22°C)

**Compounds:**

1- Fmoc-DL-Leucine-(Boc)-OH

2- Fmoc-DL-Leucine-(Boc)-OH