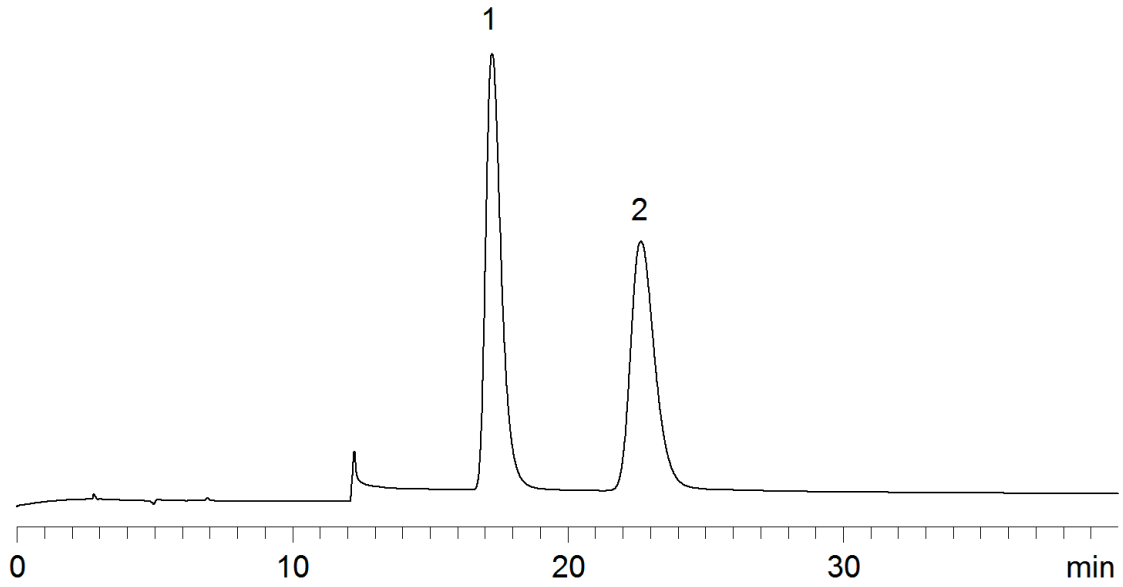


18728



Column: [Lux 5 \$\mu\$ m Cellulose-1 LC Column 250 x 4.6 mm](#)

Part No: [00G-4459-E0](#)

Dimensions: 250 x 4.6 mm ID

Elution Type: Isocratic

Elution A: 0.1% TFA in Hexane

Elution B: 0.1% TFA in IPA

Gradient Profile:

Step No.	Time (min)	Pct A	Pct B
1	25	90	10

Flow Rate: 1 mL/min

Col. Temp: ambient

Detection: UV-Vis Abs.-Variable Wave.(UV) @ 254 nm (22°C)

Compounds:

1- Fmoc-DL-Leucine-(Boc)-OH

2- Fmoc-DL-Leucine-(Boc)-OH