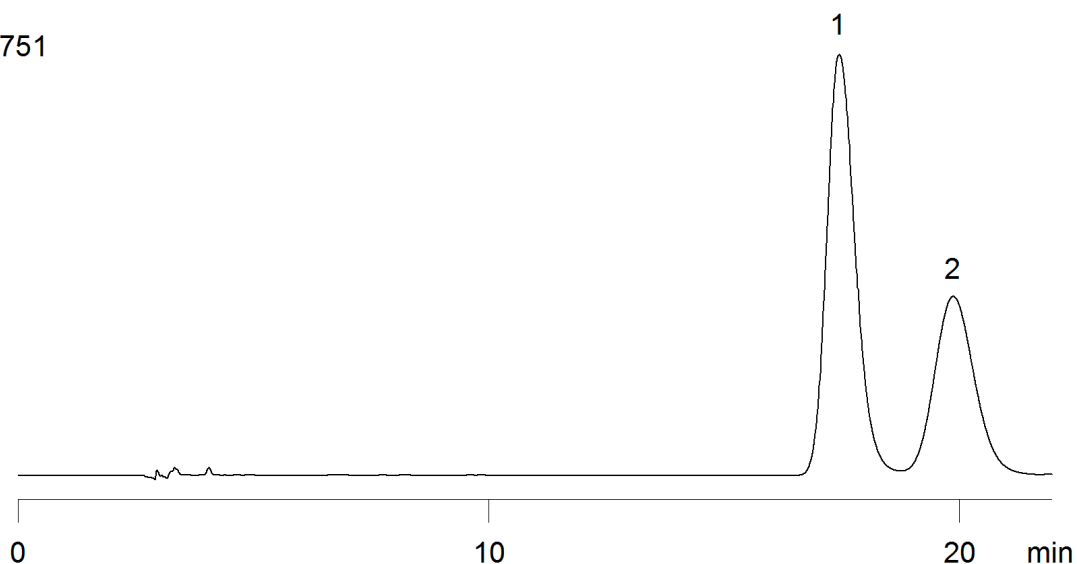


18751



Column: [Lux 5 \$\mu\$ m Amylose-2 LC Column 250 x 4.6 mm](#)

Part No: [00G-4472-E0](#)

Dimensions: 250 x 4.6 mm ID

Elution Type: Isocratic

Elution A: 0.1% TFA in CH₃CN

Elution B: 0.1 % TFA in Water

Gradient Profile:

Step No.	Time (min)	Pct A	Pct B
1	25	40	60

Flow Rate: 1 mL/min

Col. Temp: ambient

Detection: UV-Vis Abs.-Variable Wave.(UV) @ 220 nm (22°C)

Compounds:

1- Fmoc-DL-Lysine-(Boc)-OH

2- Fmoc-DL-Lysine-(Boc)-OH