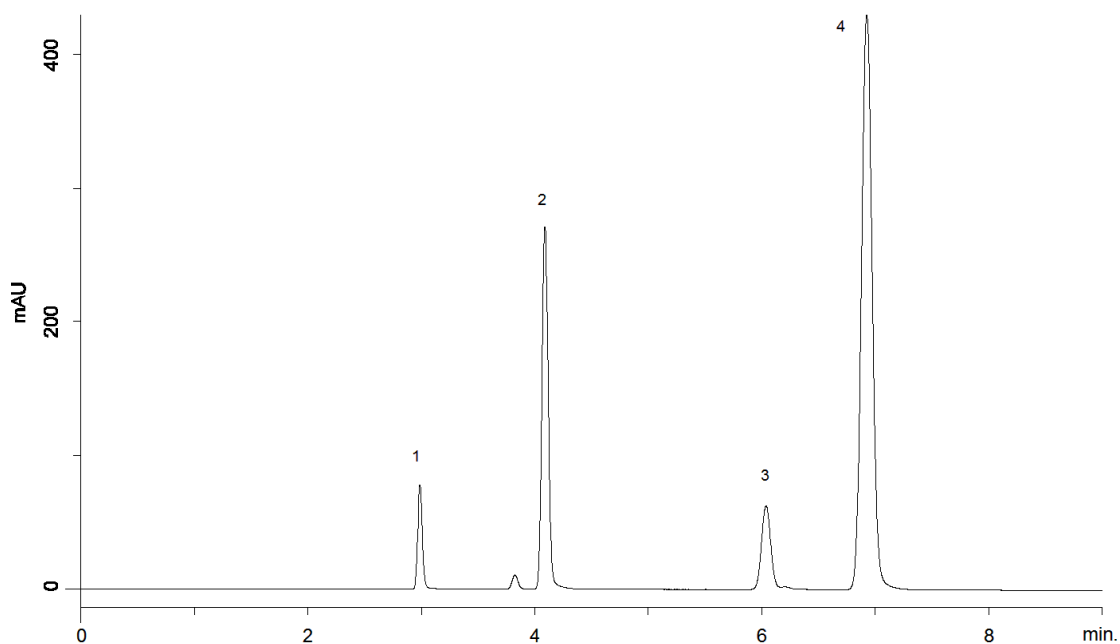


18801



Column: [Jupiter® 5 µm C18 300 Å LC Column 250 x 4.6 mm](#)

Part No: [00G-4053-E0](#)

Dimensions: 250 x 4.6 mm ID

Elution Type: Isocratic

Elution A: Acetonitrile

Elution B: Water

Gradient Profile:

Step No.	Time (min)	Pct A	Pct B
1	0	65	35

Flow Rate: 1 mL/min

Col. Temp: 25 °C

Detection: UV-Vis Abs.-Variable Wave.(UV) @ 254 nm (22°C)

Compounds:

- 1- Uracil
- 2- Acetophenone
- 3- Toluene
- 4- Naphthalene