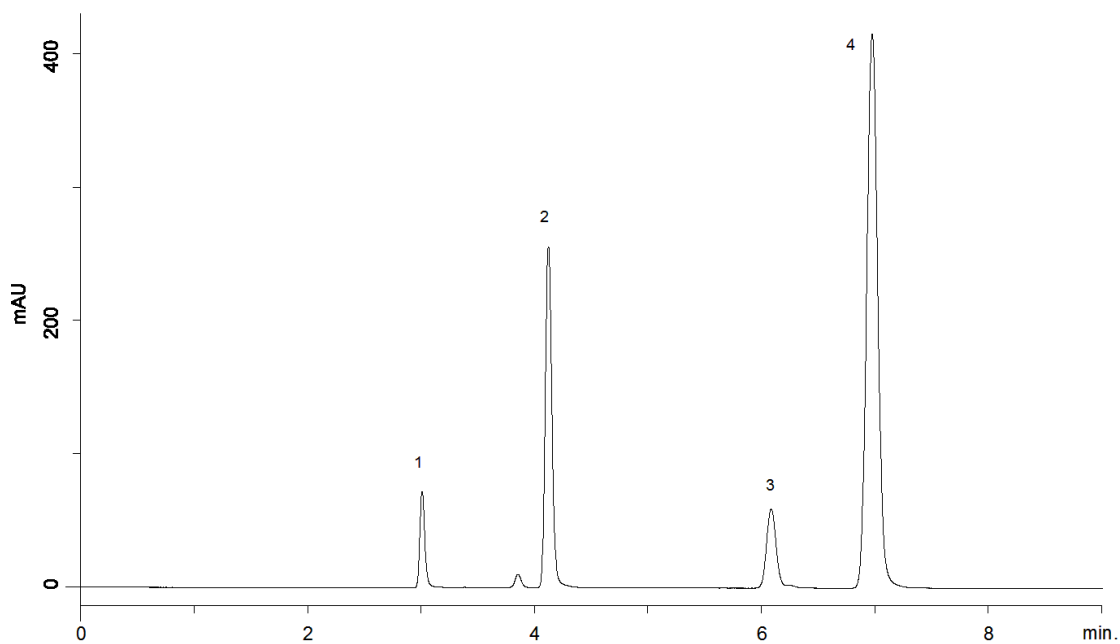


18802



**Column:** [Jupiter® 5 µm C18 300 Å LC Column 250 x 4.6 mm](#)

**Part No:** [00G-4053-E0](#)

**Dimensions:** 250 x 4.6 mm ID

**Elution Type:** Isocratic

**Elution A:** Acetonitrile

**Elution B:** Water

**Gradient Profile:**

Step No.	Time (min)	Pct A	Pct B
1	0	65	35

**Flow Rate:** 1

**Col. Temp:** 25 °C

**Detection:** UV-Vis Abs.-Variable Wave.(UV) @ 254 nm (22°C)

**Compounds:**

- 1- Uracil
- 2- Acetophenone
- 3- Toluene
- 4- Naphthalene