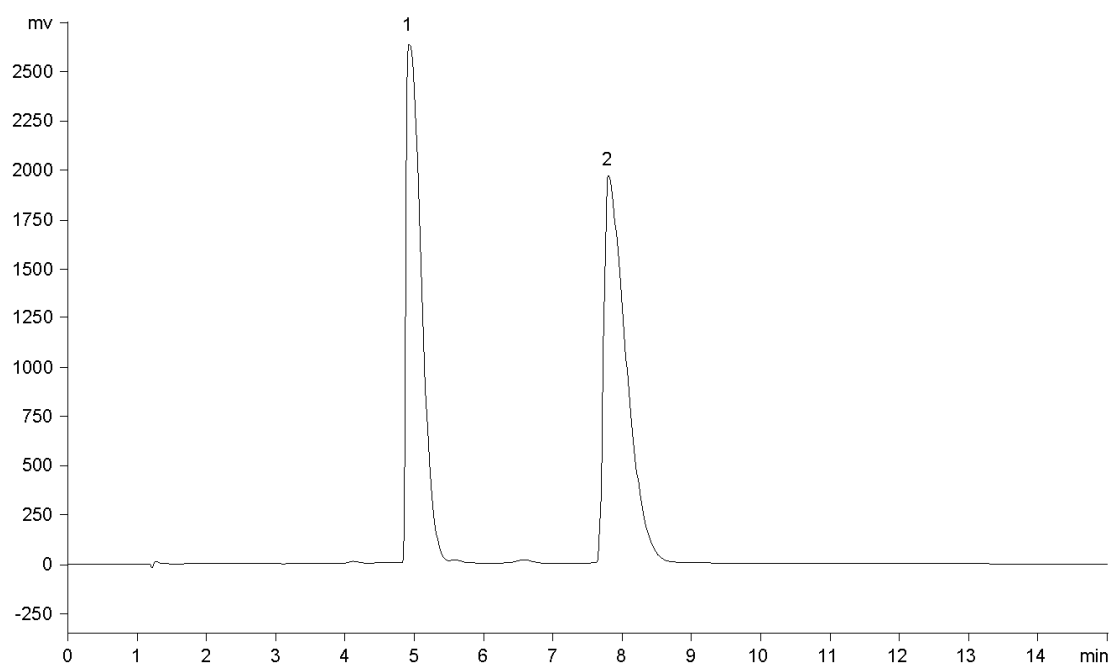


18853



Column: [Lux 5u Cellulose-1, LC Column 250 x 4.6 mm, Ea](#)

Part No: [00G-4459-E0](#)

Dimensions: 250 x 4.6 mm ID

Elution Type: Isocratic

Elution A: Methanol with 0.1% DEA

Elution B: CO₂

Gradient Profile:

Step No.	Time (min)	Pct A	Pct B
1	0	25	75

Flow Rate: 2.5 mL/min

Col. Temp: 35 °C

Detection: UV-Vis Abs.-Diode Array (PDA) @ 220 nm (22°C)

Compounds:

1- Propranolol

2- Propranolol