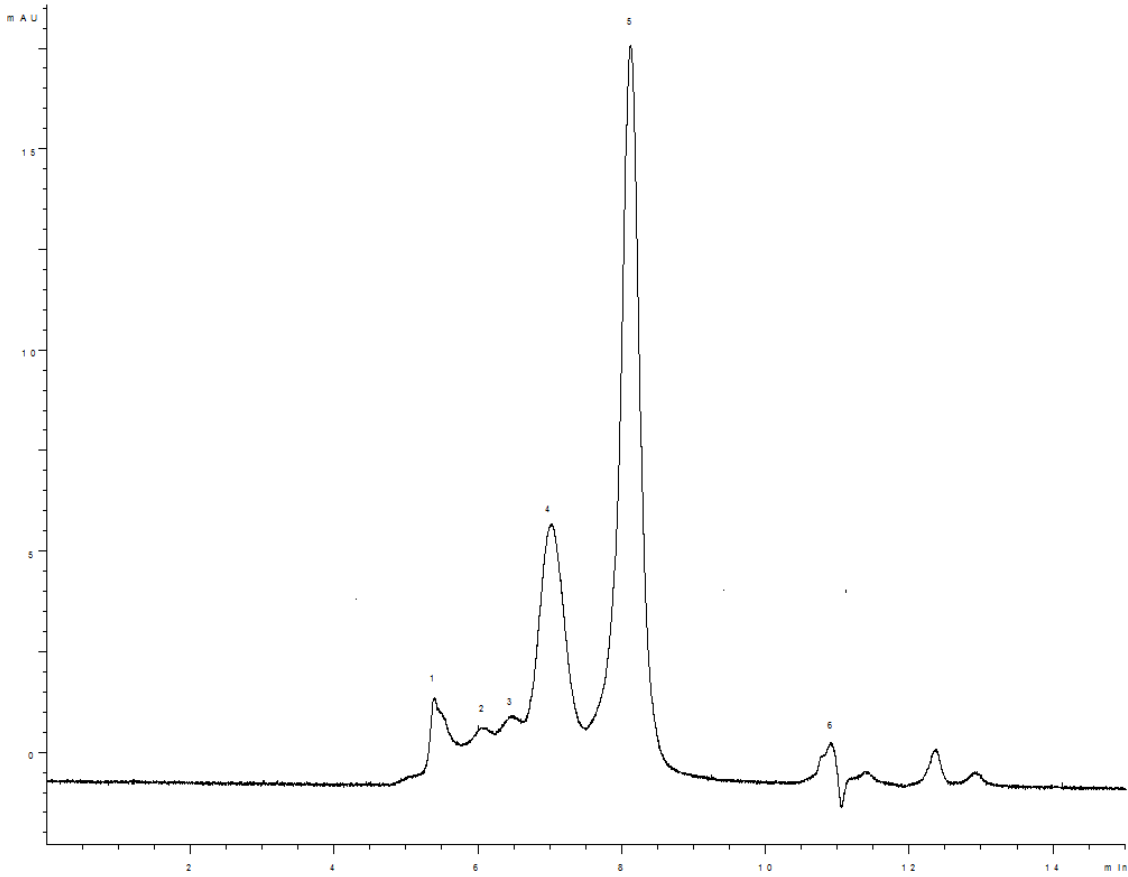


18595



Column: [BioSep™ 5 µm SEC-s2000 145 Å, LC Column 300 x 7.8 mm, Ea](#)

Part No: [00H-2145-K0](#)

Dimensions: 300 x 7.8 mm ID

Elution Type: Isocratic

Elution A: 100mM Phosphate buffer pH 6.8

Gradient Profile:

Step No.

Time (min)

Pct A

1

0

100

Flow Rate: 1

Col. Temp: ambient

Detection: UV-Vis Abs.-Variable Wave.(UV) @ 214 nm (22°C)

Compounds:

1- Aggregate Peak

2- Ig-G Dimer Peak

3- BSA Dimer Peak

4- Ig-G Monomer Peak

5- BSA Monomer Peak