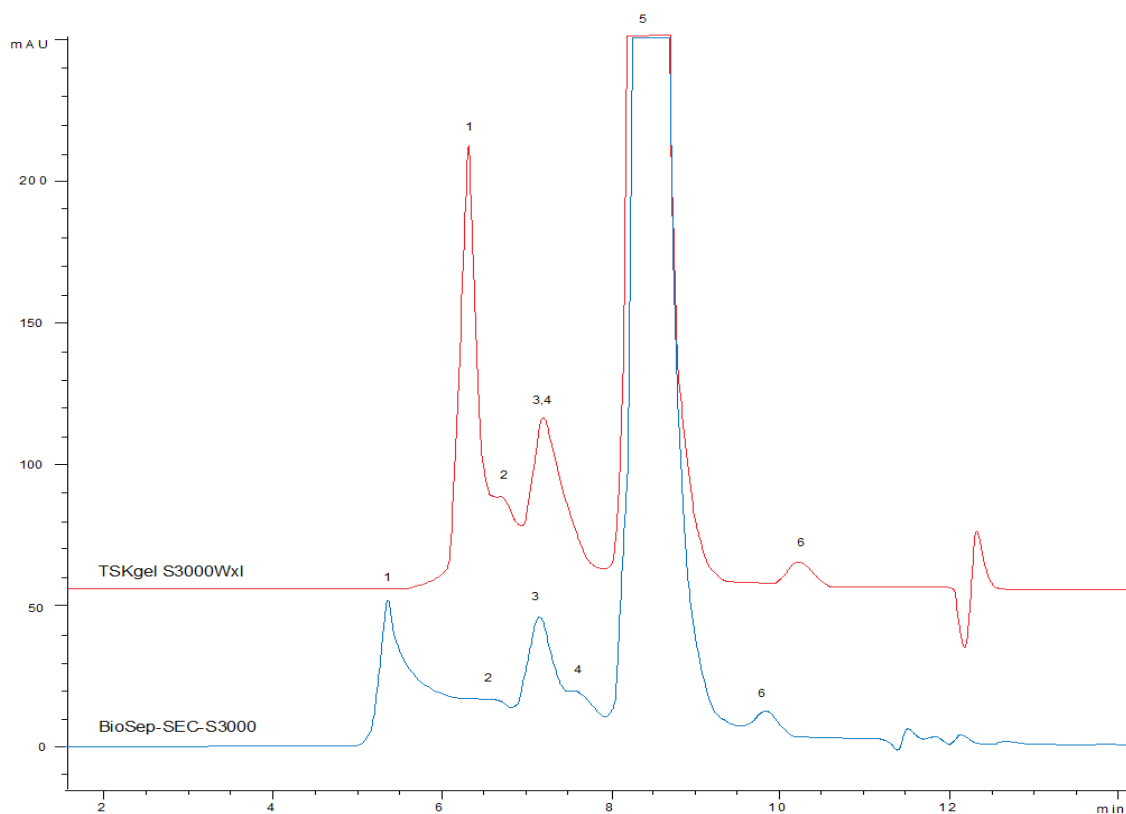


18905



**Column:** [BioSep™ 5 µm SEC-s3000 400 Å, LC Column 300 x 7.8 mm, Ea](#)  
**Part No:** [00H-2146-K0](#)

**Dimensions:** 300 x 7.8 mm ID

**Elution Type:** Isocratic

**Elution A:** 100mM Sodium Phosphate pH 6.8

**Gradient Profile:**

Step No.	Time (min)	Pct A
1	0	100

**Flow Rate:** 1 mL/min

**Col. Temp:** ambient

**Detection:** UV-Vis Abs.-Variable Wave.(UV) @ 214 nm (22°C)

**Compounds:**

- 1- HMW aggregates
- 2- Ig-G Trimer
- 3- Ig-G Dimer 1
- 4- IgG2 kappa dimer 2
- 5- Hu IgG2 kappa monomer