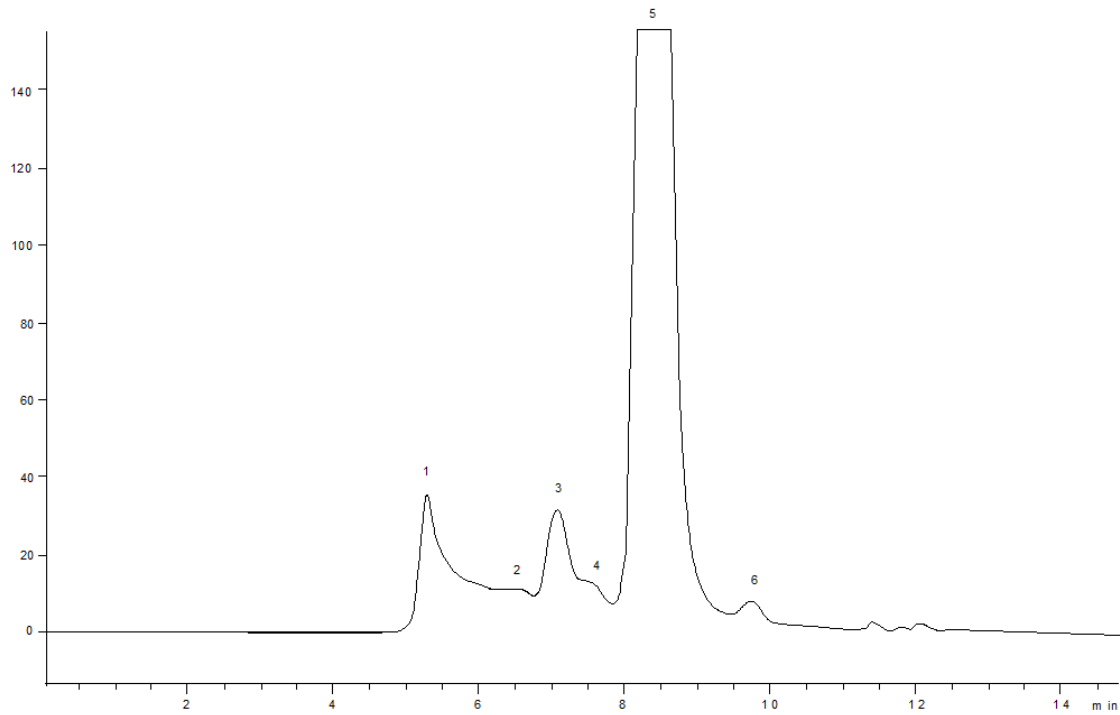


18906



Column: [BioSep™ 5 µm SEC-s3000 400 Å, LC Column 300 x 7.8 mm, Ea](#)

Part No: [00H-2146-K0](#)

Dimensions: 300 x 7.8 mm ID

Elution Type: Isocratic

Elution A: 100mM Sodium Phosphate pH 6.8

Gradient Profile:

Step No.	Time (min)	Pct A
1	0	100

Flow Rate: 1 mL/min

Col. Temp: ambient

Detection: UV-Vis Abs.-Variable Wave.(UV) @ 220 nm (22°C)

Compounds:

1- Ig-G aggregate peak

2- Ig-G2 trimer peak

3- Ig-G dimer peak #1

4- Ig-G dimer peak #2

5- Ig-G Monomer