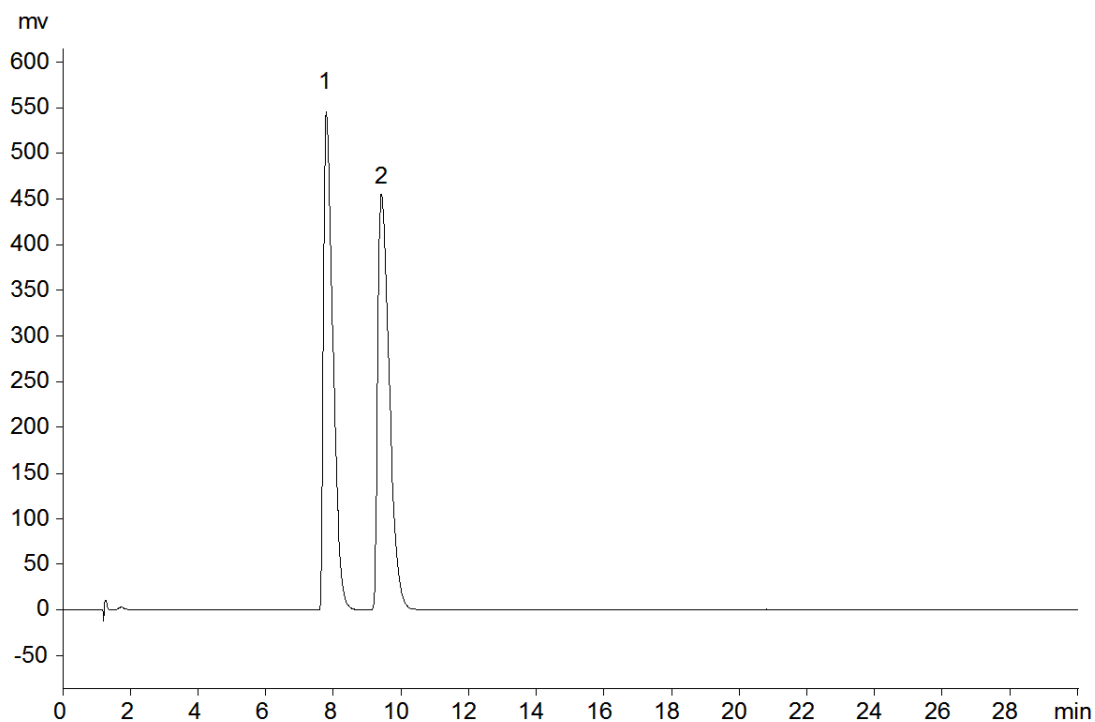


18909



**Column:** [Lux 5u Cellulose-1, LC Column 250 x 4.6 mm, Ea](#)

**Part No:** [00G-4459-E0](#)

**Dimensions:** 250 x 4.6 mm ID

**Elution Type:** Isocratic

**Elution A:** Methanol with 0.1% DEA

**Elution B:** Carbon Dioxide

**Gradient Profile:**

Step No.	Time (min)	Pct A	Pct B
1	0	25	75

**Flow Rate:** 1 mL/min

**Col. Temp:** 35 °C

**Detection:** UV-Vis Abs.-Diode Array (PDA) @ 220 nm (22°C)

**Compounds:**

1- Terfenadine

2- Terfenadine