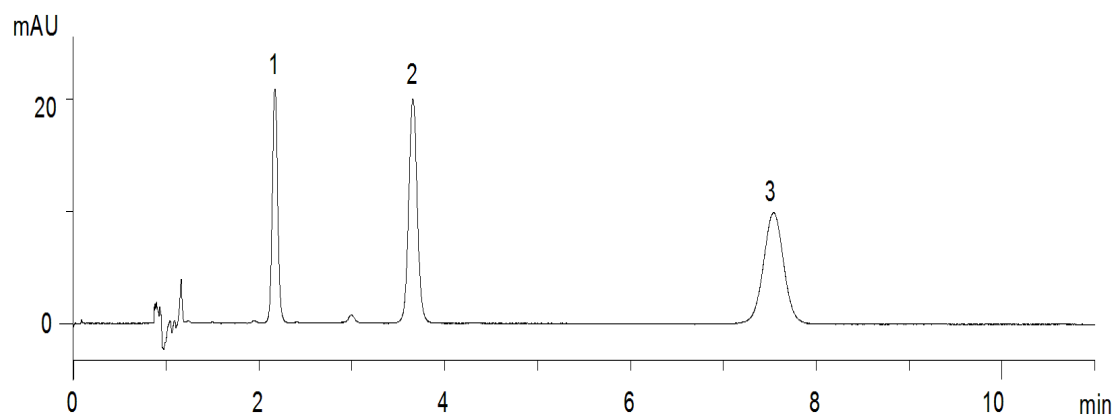


18915



Column: [Luna® 5 µm CN 100 Å LC Column 150 x 4.6 mm](#)

Part No: [00F-4255-E0](#)

Dimensions: 150 x 4.6 mm ID

Elution Type: Isocratic

Elution A: 1:25:75 acetic acid/ACN/H₂O

Gradient Profile:

Step No.	Time (min)	Pct A
1	0	100

Flow Rate: 2 mL/min

Col. Temp: 30 °C

Detection: UV-Vis Abs.-Variable Wave.(UV) @ 260 nm (22°C)

Compounds:

- 1- Impurity B
- 2- Impurity C
- 3- Warfarin Sodium