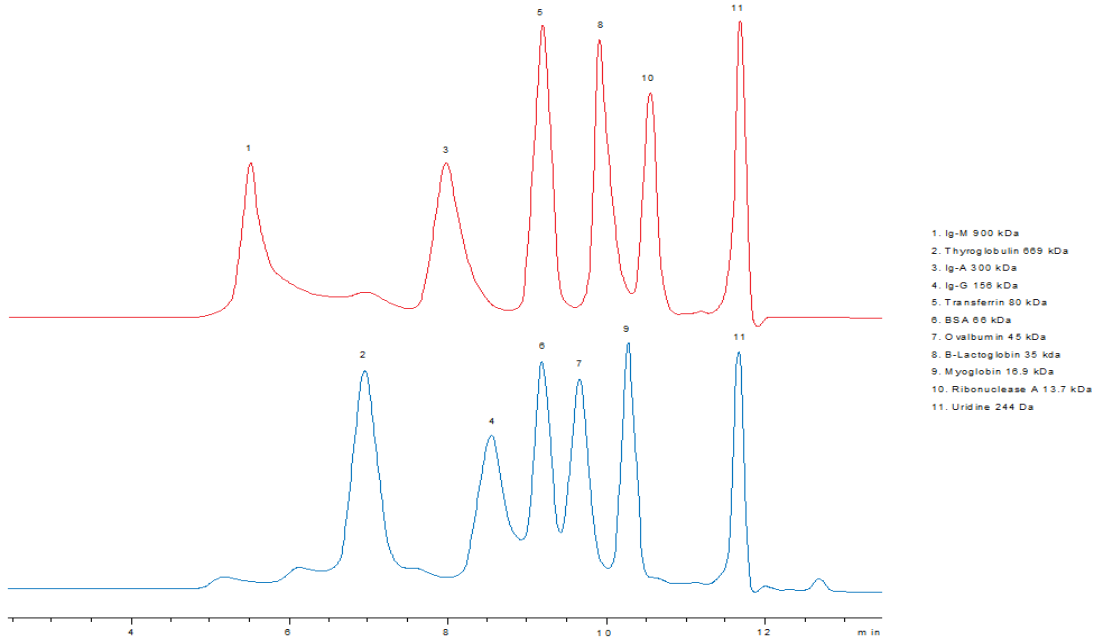


18928



Column: [BioSep™ 5 µm SEC-s3000 400 Å, LC Column 300 x 7.8 mm, Ea](#)
Part No: [00H-2146-K0](#)

Dimensions: 300 x 7.8 mm ID

[Order Recommended](#)

[Products for this Application](#)

Elution Type: Isocratic

Elution A: 100mM Sodium Phosphate, 300mM NaCl, pH 7.0

Gradient Profile:

| Step No. | Time (min) | Pct A |
|----------|------------|-------|
| 1 | 0 | 100 |

Flow Rate: 1 mL/min

Col. Temp: ambient

Detection: UV-Vis Abs.-Variable Wave.(UV) @ 280 nm (22°C)

Compounds:

- 1- Ig-M 900 kDa
- 2- Thyroglobulin 669 kDa
- 3- Ig-A 300kDa
- 4- Ig-G 156kDa
- 5- Transferrin 80kDa
- 6- BSA 66kDa
- 7- Ovalbumin 45kDa
- 8- B-Lactoglobulin 35kDa
- 9- Myoglobin 16.9 kDa
- 10- Ribonuclease A 13.7 kDa
- 11- Uridine 244 kDa