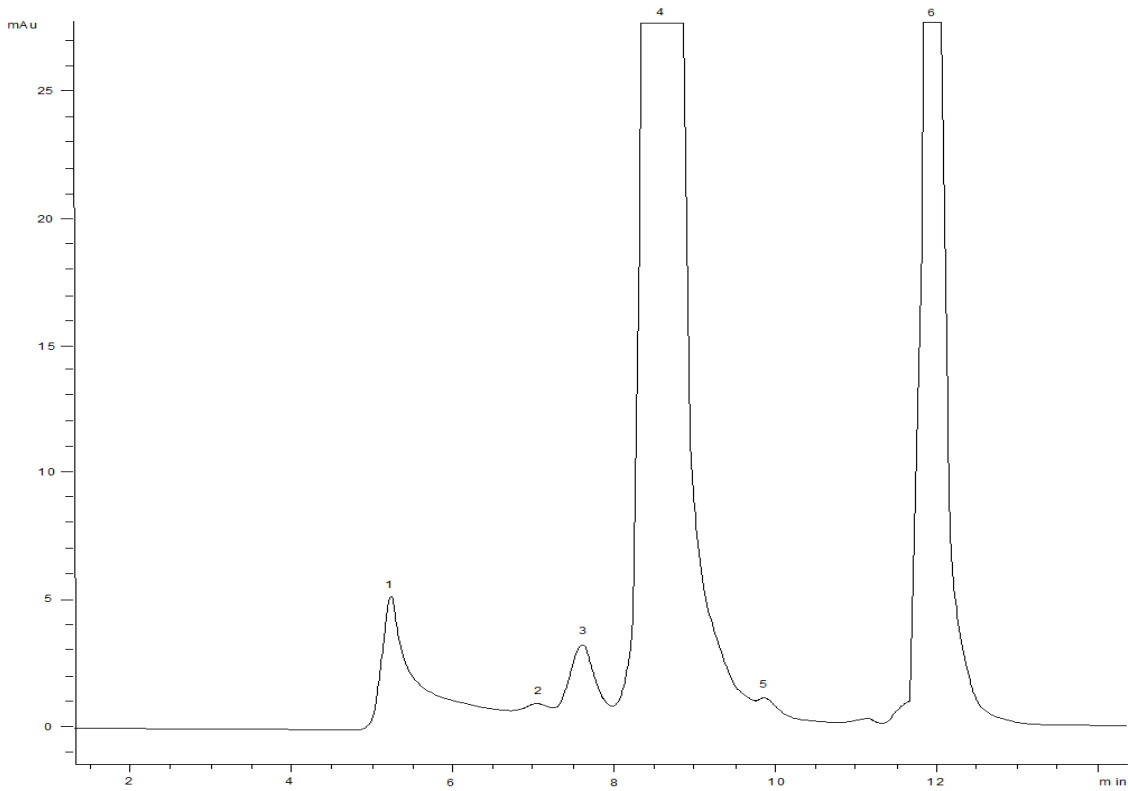


18937



Column: [BioSep™ 5 µm SEC-s3000 400 Å, LC Column 300 x 7.8 mm, Ea](#)

Part No: [00H-2146-K0](#)

Dimensions: 300 x 7.8 mm ID

Elution Type: Isocratic

Elution A: 50mM Sodium Phosphate, 300mM NaCL pH 6.8

Gradient Profile:

Step No.	Time (min)	Pct A
1	0	100

Flow Rate: 1 mL/min

Col. Temp: ambient

Detection: UV-Vis Abs.-Variable Wave.(UV) @ 220 nm (22°C)

Compounds;

- 1- HMW aggregates
- 2- IgG1 kappa dimer 1
- 3- IgG1 kappa dimer 2
- 4- Ig-G Monomer
- 5- Low MW impurity
- 6- Void Volume Peak