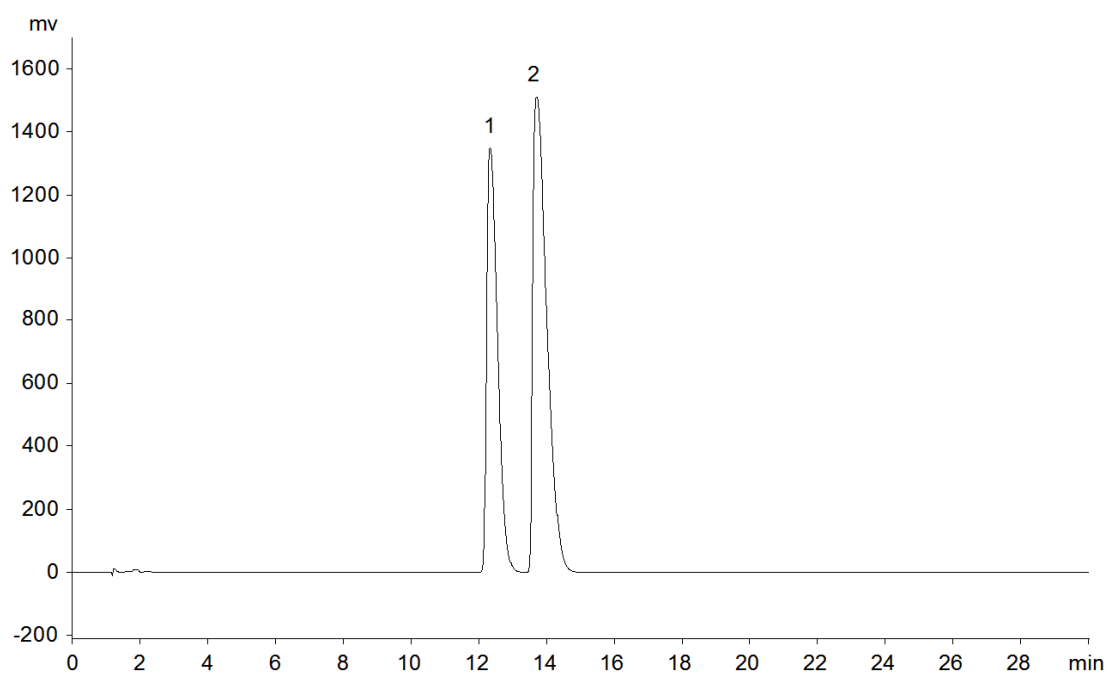


18946



**Column:** [Lux 5  \$\mu\$ m Cellulose-1 LC Column 250 x 4.6 mm](#)

**Part No:** [00G-4459-E0](#)

**Dimensions:** 250 x 4.6 mm ID

**Elution Type:** Isocratic

**Elution A:** Methanol with 0.1% DEA

**Elution B:** Carbon Dioxide

**Gradient Profile:**

| Step No. | Time (min) | Pct A | Pct B |
|----------|------------|-------|-------|
| 1        | 0          | 15    | 85    |

**Flow Rate:** 1 mL/min

**Col. Temp:** 35 °C

**Detection:** UV-Vis Abs.-Diode Array (PDA) @ 220 nm (22°C)

**Compounds:**

- 1- 3,5-Dinitrobenzoyl-a-Methylbenzylamine
- 2- 3,5-Dinitrobenzoyl-a-Methylbenzylamine