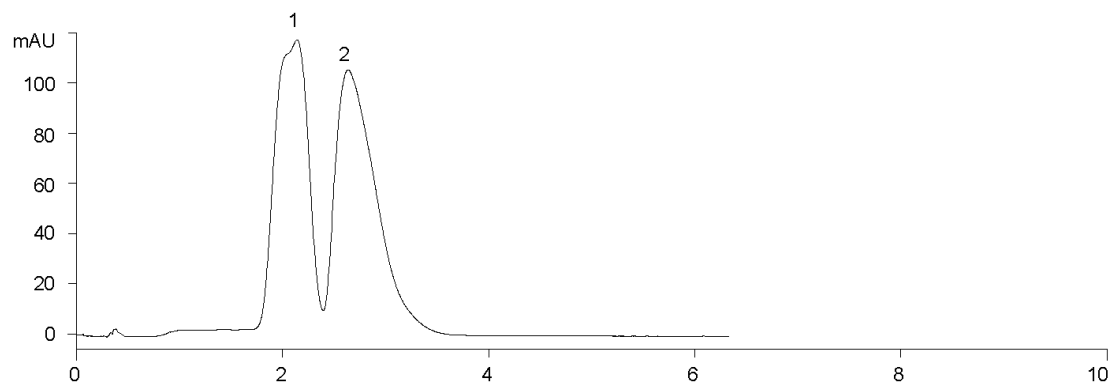


18974



**Column:** [Lux 5  \$\mu\$ m Amylose-2 LC Column 50 x 4.6 mm](#)

**Part No:** [00B-4472-E0](#)

**Dimensions:** 50 x 4.6 mm ID

**Elution Type:** Isocratic

**Elution A:** Ethanol

**Elution B:** Carbon Dioxide

**Gradient Profile:**

Step No.	Time (min)	Pct A	Pct B
1	0	20	80

**Flow Rate:** 2.5 mL/min

**Col. Temp:** 35 °C

**Detection:** UV-Vis Abs.-Diode Array (PDA) @ 254 nm (22°C)

**Compounds:**

1- Propafenone

2- Propafenone