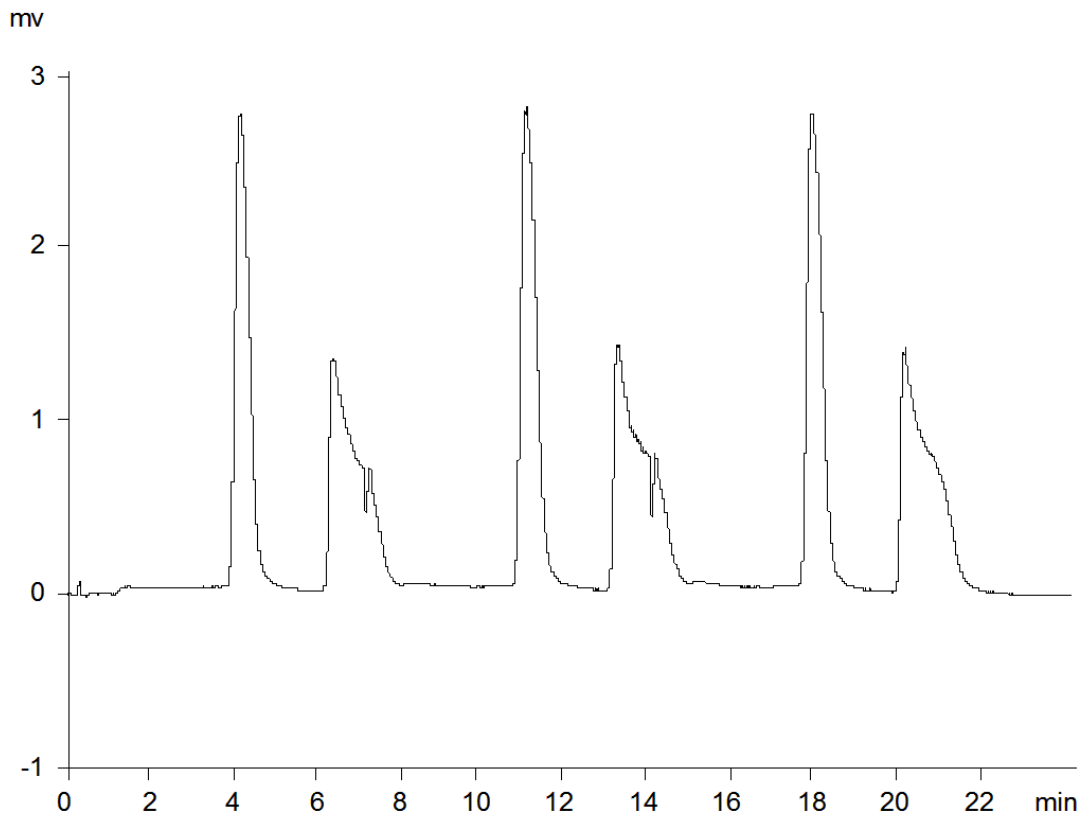


18976



**Column:** [Lux® 5u Amylose-2, LC Column 100 x 21.2 mm, AXIA™ Packed, Ea](#)  
**Part No:** [00D-4472-P0-AX](#)

**Dimensions:** 100 x 21.2 mm ID

**Elution Type:** Isocratic

**Elution A:** Ethanol with 0.1% DEA

**Elution B:** Carbon Dioxide

**Gradient Profile:**

Step No.	Time (min)	Pct A	Pct B
1	0	20	80

**Flow Rate:** 50 mL/min

**Col. Temp:** 35 °C

**Detection:** UV-Vis Abs.-Diode Array (PDA) @ 220 nm (22°C)

**Compounds:**

- 1- Propafenone
- 2- Propafenone