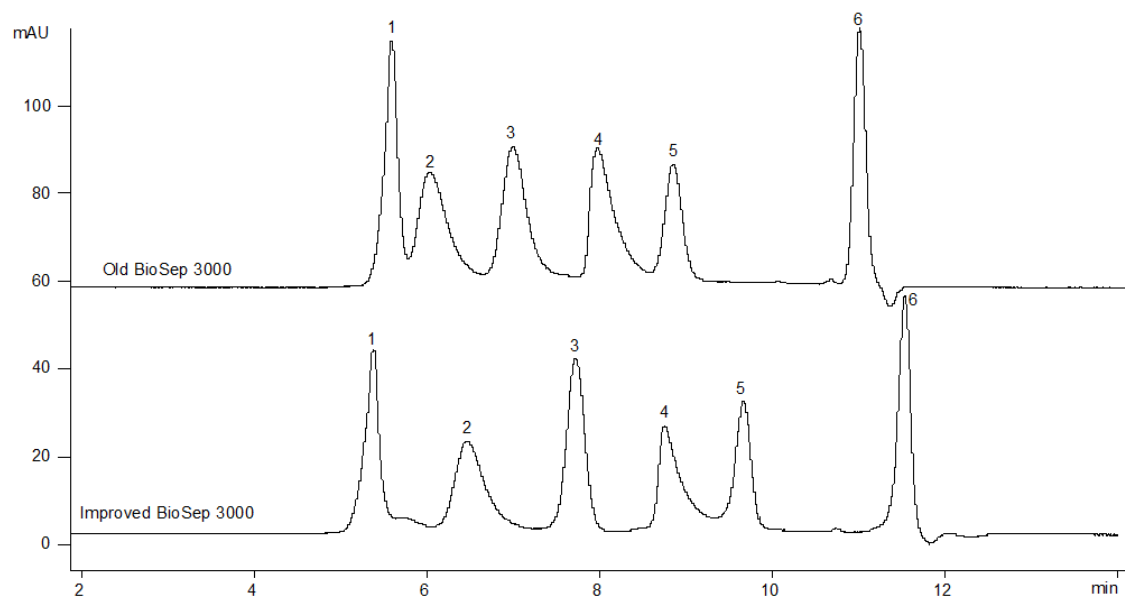


19086



**Column:** [BioSep™ 5 µm SEC-s3000 400 Å, LC Column 300 x 7.8 mm, Ea](#)  
**Part No:** [00H-2146-K0](#)

**Dimensions:** 300 x 7.8 mm ID

**Elution Type:** Isocratic

**Elution A:** 100mM Sodium Phosphate, 300mM NaCl, pH 7.0

**Gradient Profile:**

Step No.	Time (min)	Pct A
1	0	100

**Flow Rate:** 1 mL/min

**Col. Temp:** ambient

**Detection:** UV-Vis Abs.-Variable Wave.(UV) @ 280 nm (22°C)

1- IgM 900 KDa

2- IgA 320 KDa

3- Transferrin 80 KDa

4- Beta-Lactoglobulin A 35 KDa

5- Ribonuclease A 13.7 KDa

6- Uridine 244 Da