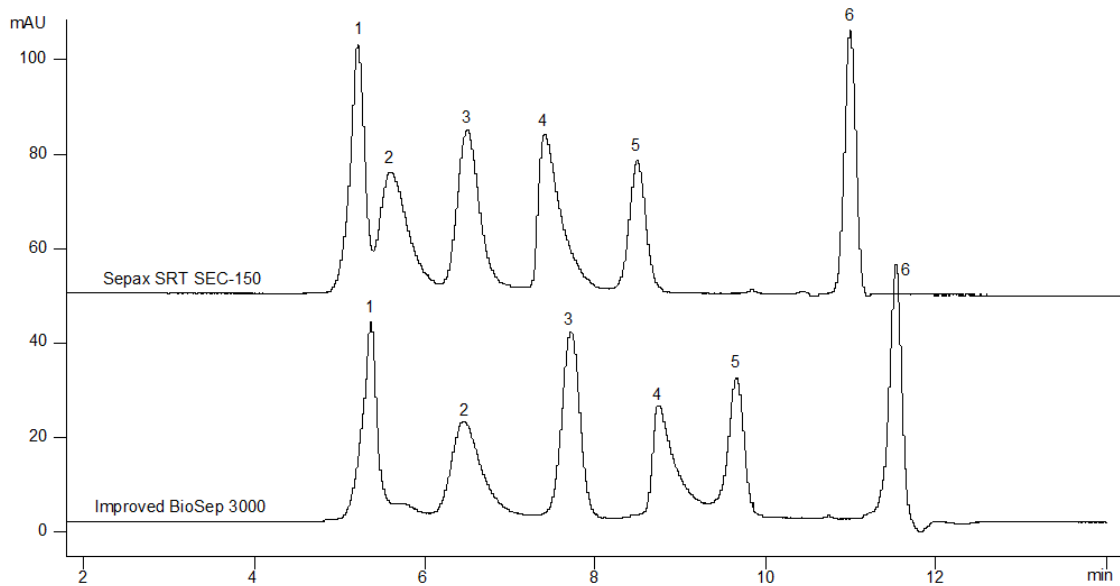


19087



Column: [BioSep™ 5 µm SEC-s3000 400 Å, LC Column 300 x 7.8 mm, Ea](#)
Part No: [00H-2146-K0](#)

Dimensions: 300 x 7.8 mm ID

Elution Type: Isocratic

Elution A: 100mM Sodium Phosphate, 300mM NaCl, pH 7.0

Gradient Profile:

Step No.	Time (min)	Pct A
1	0	100

Flow Rate: 1 mL/min

Col. Temp: ambient

Detection: UV-Vis Abs.-Variable Wave.(UV) @ 280 nm (22°C)

Compounds:

1- IgM 900 KDa

2- IgA 320 KDa

3- Transferrin 80 KDa

4- Beta-Lactoglobulin A 35 KDa

5- Ribonuclease A 13.7 KDa

6- Uridine 244 Da