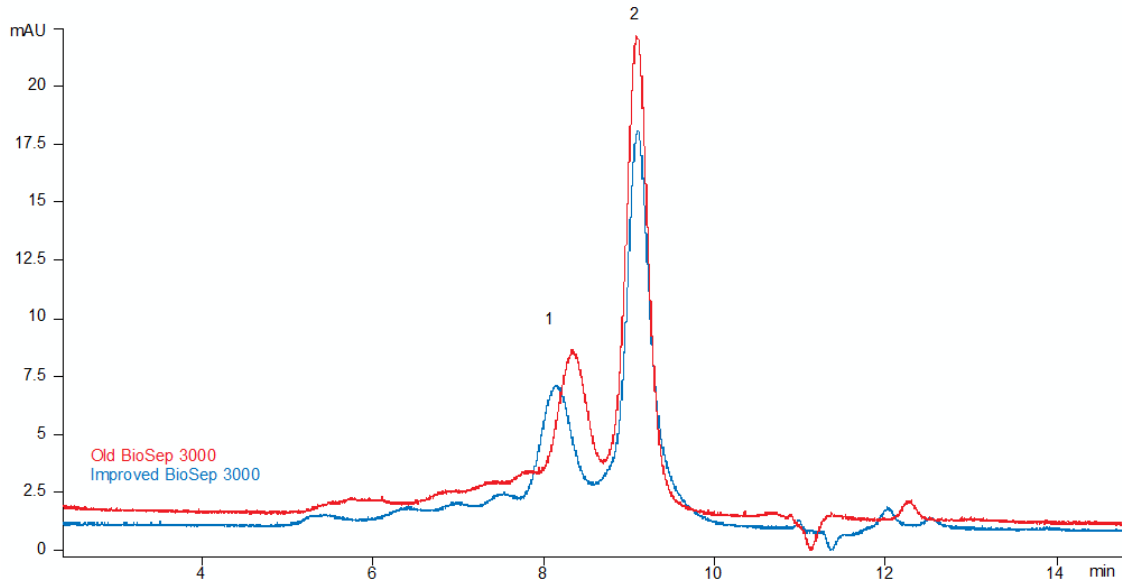


19096



Column: [BioSep™ 5 µm SEC-s3000 400 Å, LC Column 300 x 7.8 mm, Ea](#)

Part No: [00H-2146-K0](#)

Dimensions: 300 x 7.8 mm I

Elution Type: Isocratic

Elution A: 100mM sodium phosphate, 200mM Arginine, pH 6.8

Gradient Profile:

| Step No. | Time (min) | Pct A |
|----------|------------|-------|
| 1 | 0 | 100 |

Flow Rate: 1 mL/min

Col. Temp: ambient

Detection: UV-Vis Abs.-Variable Wave.(UV) @ 280 nm (22°C)

Compounds:

1- Hu Serum