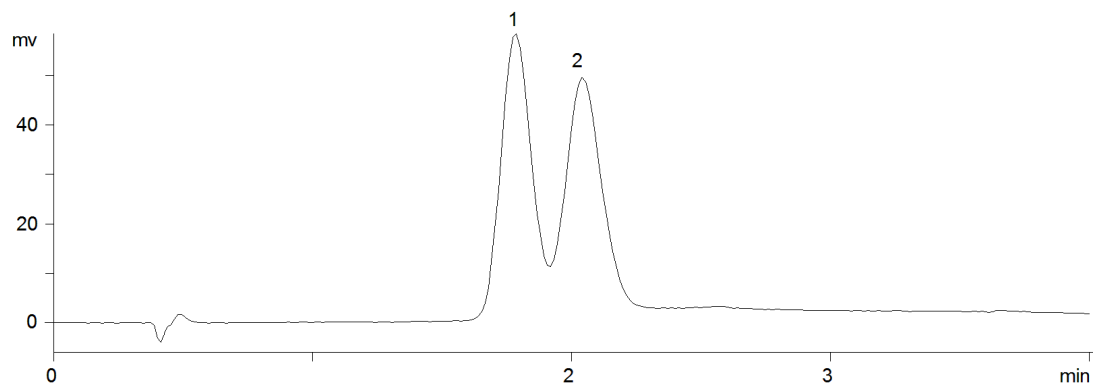


19109



**Column:** [Lux® 5u Amylose-2, LC Column 50 x 4.6 mm, Ea](#)

**Part No:** [00B-4472-E0](#)

**Dimensions:** 50 x 4.6 mm ID

**Elution Type:** Isocratic

**Elution A:** Methanol with 0.1% DEA

**Elution B:** Carbon Dioxide

**Gradient Profile:**

Step No.	Time (min)	Pct A	Pct B
1	0	20	80

**Flow Rate:** 2.5 mL/min

**Col. Temp:** 35 °C

**Detection:** UV-Vis Abs.-Fixed Wave. (UV) @ 254 nm (35°C)

**Compounds:**

1- Propafenone