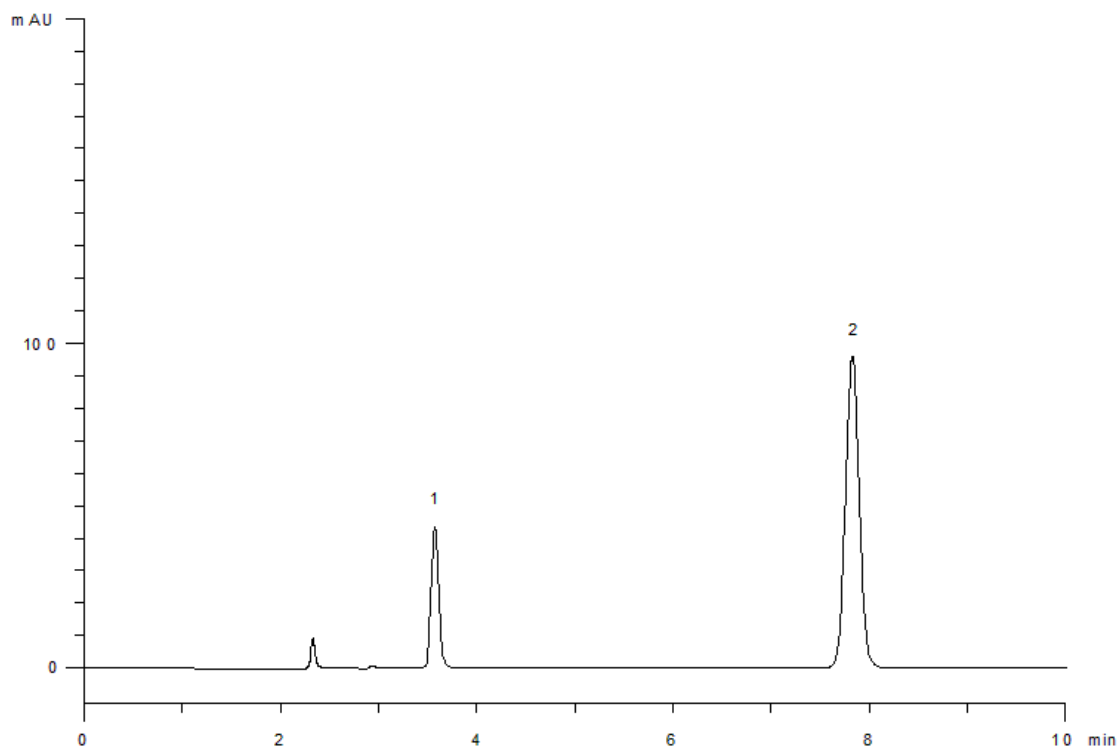


19521



Column: [Luna® 5 µm C8\(2\) 100 Å LC Column 250 x 4.6 mm](#)

Part No: [00G-4249-E0](#)

Dimensions: 250 x 4.6 mm ID

Elution Type: Isocratic

Elution A: 0.5g SDS in 18mL of 150mM phosphoric acid , 90mL ACN, 90mL MeOH diluted to 250mL w/water

Gradient Profile:

Step No.	Time (min)	Pct A
1	10	100

Flow Rate: 1.5 mL/min

Col. Temp: 25 °C

Detection: UV-Vis Abs.-Variable Wave.(UV) @ 290 nm (22°C)

Compounds:

- 1- Procainamide
- 2- Propranolol