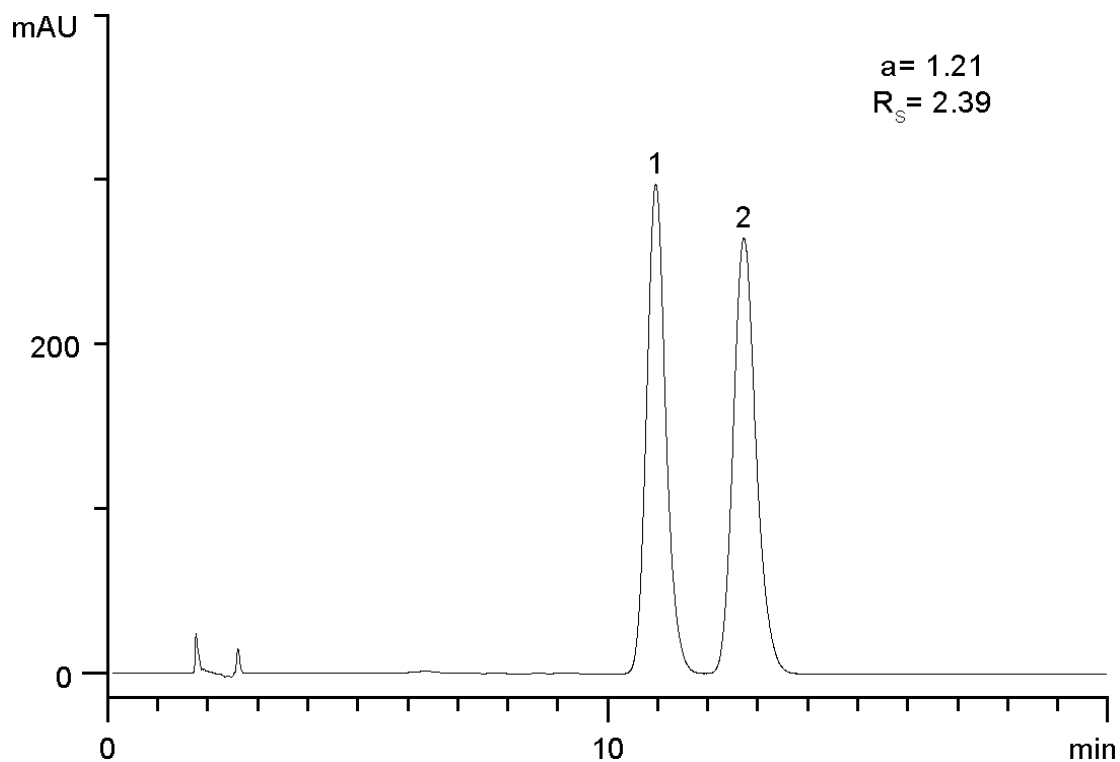


19632



Column: [Lux 5u Cellulose-1, LC Column 250 x 4.6 mm, Ea](#)

Part No: [00G-4459-E0](#)

Dimensions: 250 x 4.6 mm ID

Elution Type: Isocratic

Elution A: Hexane / EtOH (85:15) DEA (0.1%)

Gradient Profile:

Step No.	Time (min)	Pct A
1	0	100

Flow Rate: 1.5 mL/min

Col. Temp: ambient

Detection: UV-Vis Abs.-Variable Wave.(UV) @ 254 nm (22°C)

Compounds:

1- Voriconazole

2- Voriconazole