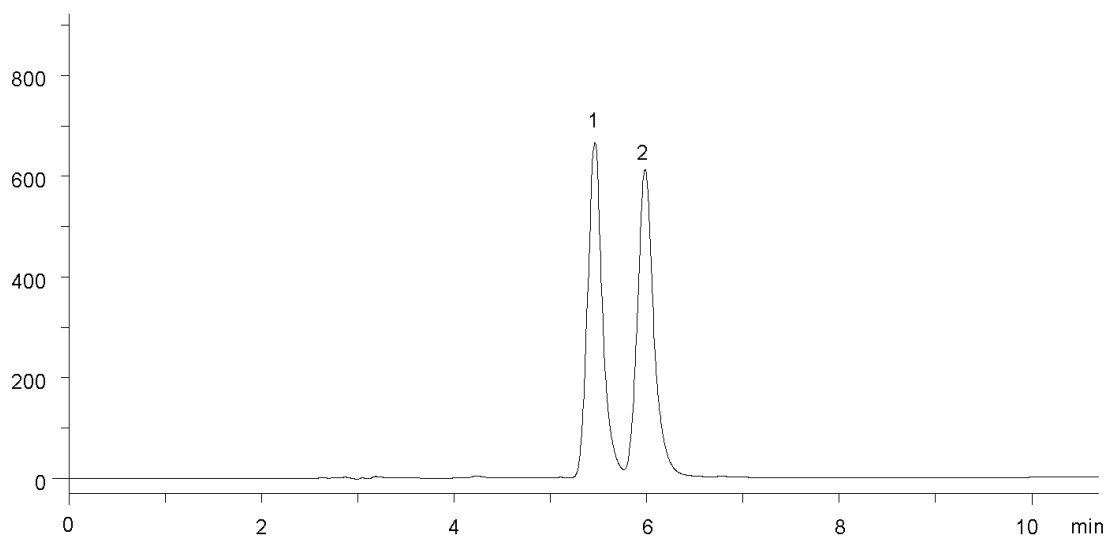


20141  
mAU

$\alpha = 1.19$



**Column:** [Lux 5  \$\mu\$ m Cellulose-2 LC Column 250 x 4.6 mm](#)

**Part No:** [00G-4457-E0](#)

**Dimensions:** 250 x 4.6 mm ID

**Elution Type:** Isocratic

**Elution A:** ACN / 20mM NH<sub>4</sub>HCO<sub>3</sub> (60:40) with DEA (0.1%) in buffer

**Gradient Profile:**

Step No.	Time (min)	Pct A
1	0	100

**Flow Rate:** 1 mL/min

**Col. Temp:** ambient

**Detection:** UV-Vis Abs.-Variable Wave.(UV) @ 220 nm (22°C)

**Compounds:**

1- Flumequine

2- Flumequine