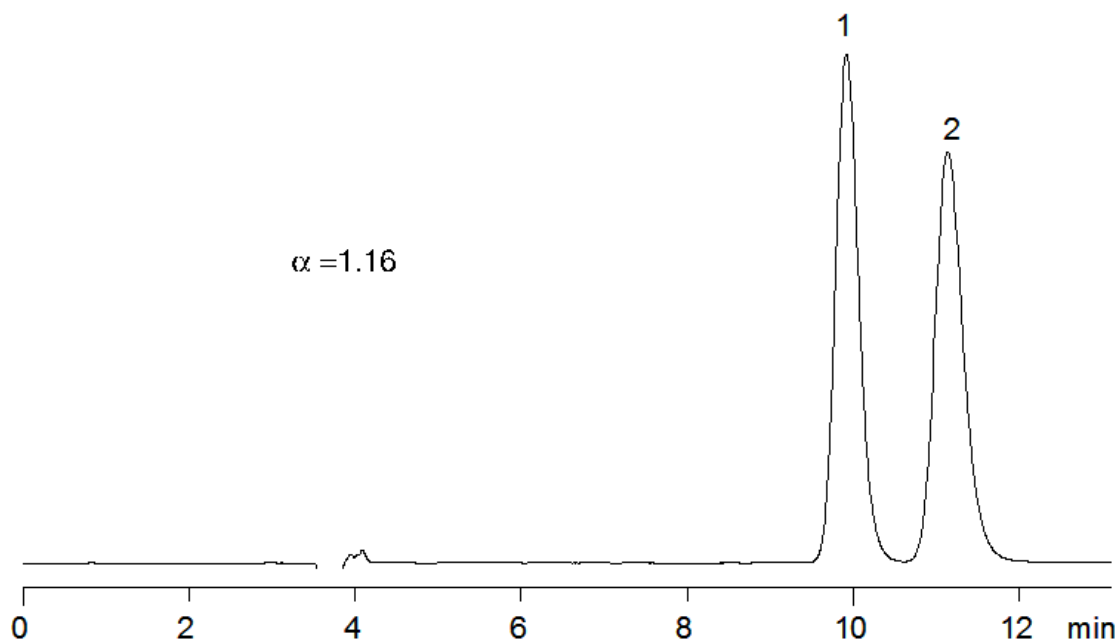


20220



**Column:** [Lux 5  \$\mu\$ m Cellulose-1 LC Column 250 x 4.6 mm](#)

**Part No:** [00G-4459-E0](#)

**Dimensions:** 250 x 4.6 mm ID

**Elution Type:** Isocratic

**Elution A:** MeOH / 20mM NH<sub>4</sub>HCO<sub>3</sub>+0.1%DEA (80:20) with None in buffer

**Gradient Profile:**

Step No.	Time (min)	Pct A
1	0	100

**Flow Rate:** 1 mL/min

**Col. Temp:** ambient

**Detection:** UV-Vis Abs.-Variable Wave.(UV) @ 220 nm (22°C)

**Compounds:**

1- Hydroxyzine

2- Hydroxyzine