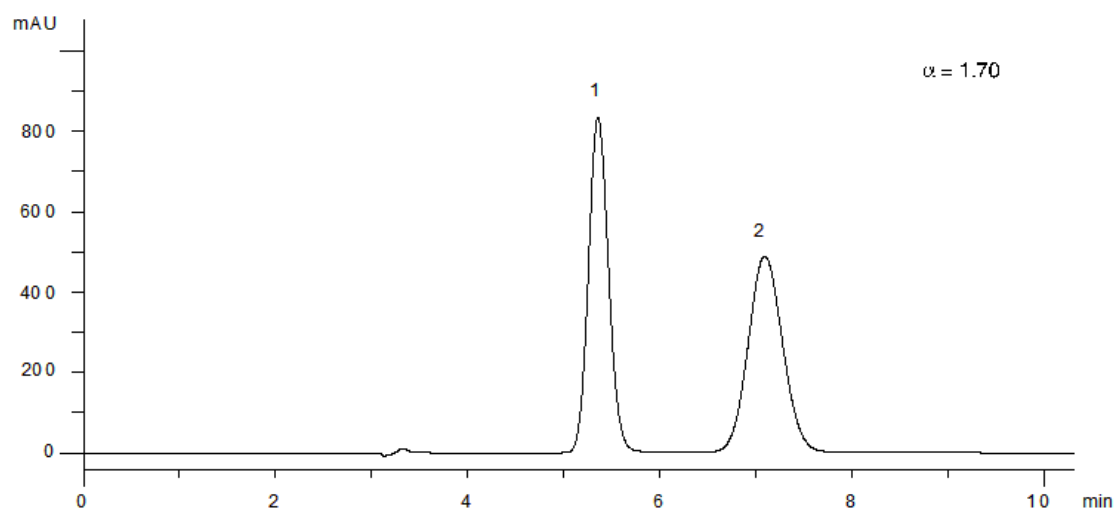


20288



**Column:** [Lux 5  \$\mu\$ m Cellulose-3 LC Column 250 x 4.6 mm](#)

**Part No:** [00G-4493-E0](#)

**Dimensions:** 250 x 4.6 mm ID

**Elution Type:** Isocratic

**Elution A:** MeOH / 20mM NH<sub>4</sub>HCO<sub>3</sub>+0.1%DEA (80:20) None

**Gradient Profile:**

| Step No. | Time (min) | Pct A |
|----------|------------|-------|
| 1        | 0          | 100   |

**Flow Rate:** 1 mL/min

**Col. Temp:** ambient

**Detection:** UV-Vis Abs.-Variable Wave.(UV) @ 220 nm (22°C)

**Compounds:**

1- Hydroxyphenytoin

2- Hydroxyphenytoin