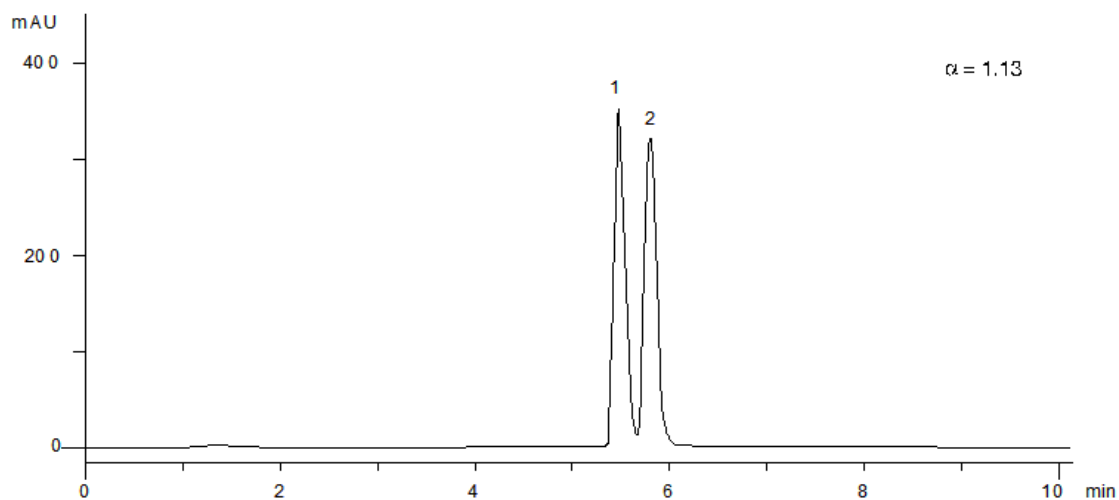


20344



Column: [Lux 5 \$\mu\$ m Cellulose-4 LC Column 250 x 4.6 mm](#)

Part No: [00G-4491-E0](#)

Dimensions: 250 x 4.6 mm ID

Elution Type: Isocratic

Elution A: Hexane / IPA (80:20) DEA (0.1%)

Gradient Profile:

Step No.	Time (min)	Pct A
1	0	100

Flow Rate: 1 mL/min

Col. Temp: ambient

Detection: UV-Vis Abs.-Variable Wave.(UV) @ 220 nm (22°C)

Compounds:

1- Carbinoxamine

2- Carbinoxamine