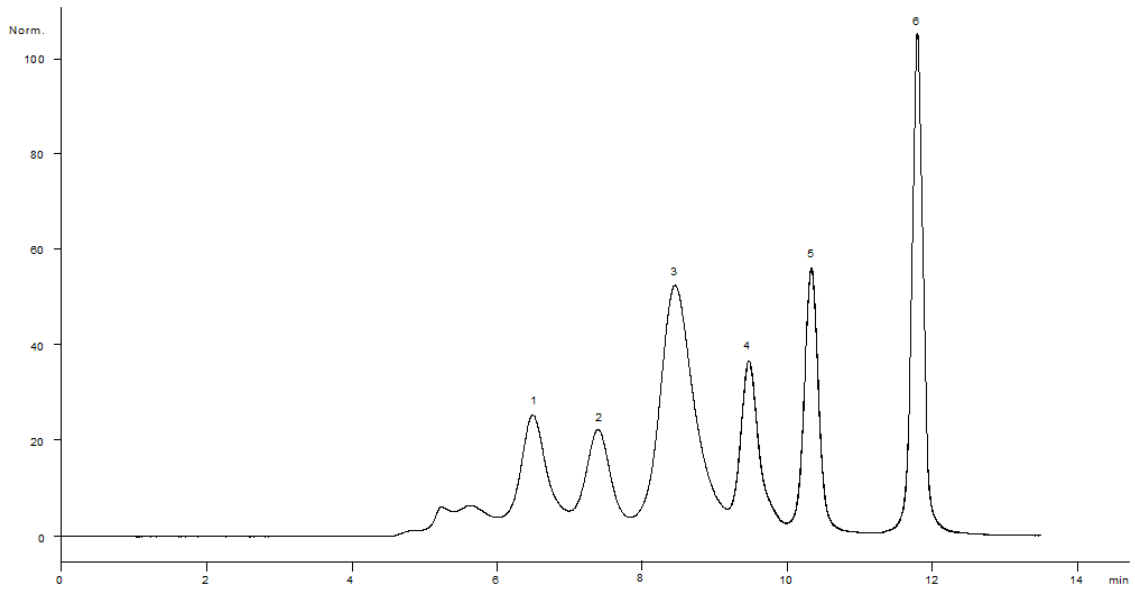


20602



Column: [BioSep™ 5 µm SEC-s3000 400 Å, LC Column 300 x 7.8 mm, Ea](#)
Part No: [00H-2146-K0](#)

Dimensions: 300 x 7.8 mm ID

Elution Type: Isocratic

Elution A: 100 mm Sodium Phosphate in Water pH 6.8 with 0.025% NaN₃

Gradient Profile:

Step No.	Time (min)	Pct A
1	0	100

Flow Rate: 1 mL/min

Col. Temp: ambient

Detection: UV-Vis Abs.-Variable Wave.(UV) @ 280 nm (22°C)

Compounds:

- 1- Thyroglobin (MW699 KDa)
- 2- Ig-A (300 KDa)
- 3- Ig-G (150 KDa)
- 4- Ovalbumin (44KDa)
- 5- Myoglobin (17 KDa)
- 6- Uridine