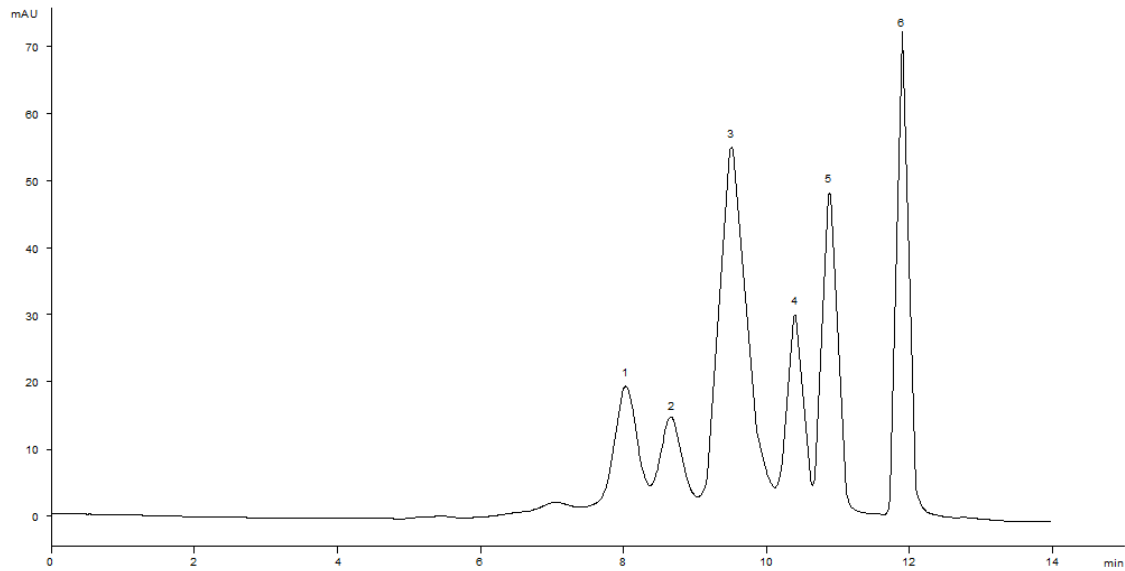


20805



Column: [BioSep™ 5 µm SEC-s4000 500 Å, LC Column 300 x 7.8 mm, Ea](#)

Part No: [00H-2147-K0](#)

Dimensions: 300 x 7.8 mm ID

Elution Type: Isocratic

Elution A: 100 mm Sodium Phosphate in Water pH 6.8 with 0.025% NaN₃

Gradient Profile:

Step No.	Time (min)	Pct A
1	0	100

Flow Rate: 1 mL/min

Col. Temp: ambient

Detection: UV-Vis Abs.-Variable Wave.(UV) @ 280 nm (22°C)

Compounds:

1- Thyroglobin (MW699 KDa)

2- Ig-A (300 KDa)

3- Ig-G (150 KDa)

4- Ovalbumin (44KDa)

5- Myoglobin (17 KDa)

6- Uridine