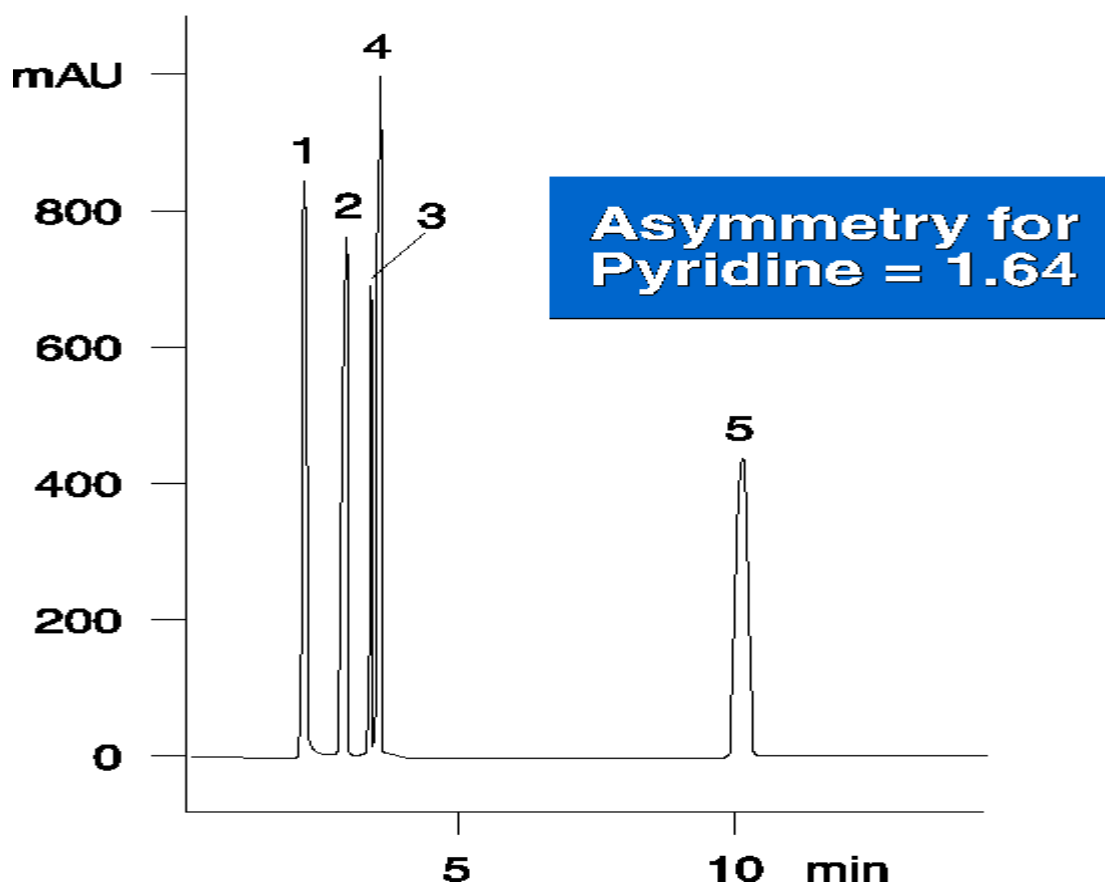


5468

5 μ ODS (2)



Column: [Prodigy™ 5 \$\mu\$ m ODS-2 150 Å LC Column 150 x 4.6 mm](#)

Part No: [00F-3300-E0](#)

Dimensions: 150 x 4.6 mm ID

Elution Type: Isocratic

Elution A: Water

Elution B: Acetonitrile

Gradient Profile:

Step No.	Time (min)	Pct A	Pct B
1	0	50	50

Flow Rate: 1 mL/min

Col. Temp: ambient

Detection: UV-Vis Abs.-Variable Wave.(UV) @ 254 nm (22°C)

Compounds:

- 1- Pyridine
- 2- Phenol
- 3- o-, m-and p-Toluidine
- 4- Toluene