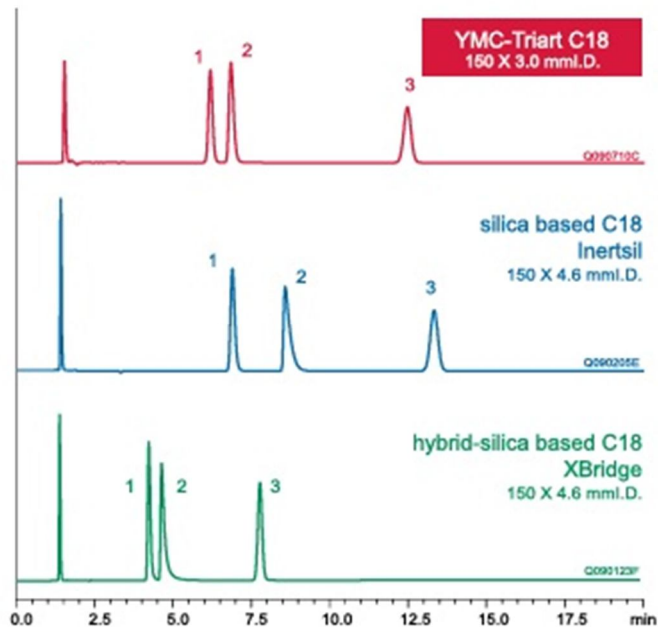
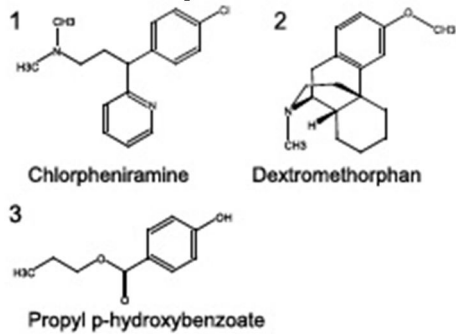


Basic compounds



Ingredients in a cough/cold medica-



Column: 5 μ m, 150 x 3.0 or 150 x 4.6 mm ID
 Eluent: 20 mM KH_2HPO_4 - K_2HPO_4 (pH 6.9) / acetonitrile (65/35)
 Flow rate: 0.425 ml/min for 3.0 mm ID
 1.0 ml/min for 4.6 mm ID
 Temperature: 40 °C
 Sample: UV at 235 nm

tion

The innovative surface modification technology results in excellent peak shapes even for basic compounds that often exhibit peak tailing with conventional silica- and hybrid silicabased ODS columns.