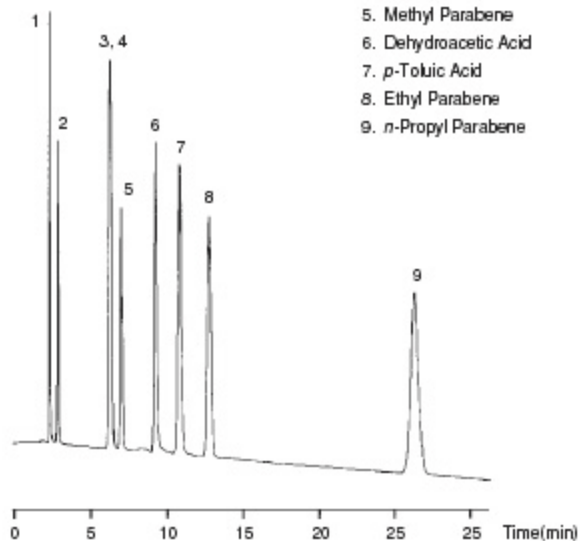


Food Additive

- Sample:
1. Sodium Saccharin
 2. *p*-Hydroxybenzoic Acid
 3. Sorbic Acid
 4. Benzoic Acid
 5. Methyl Parabene
 6. Dehydroacetic Acid
 7. *p*-Toluic Acid
 8. Ethyl Parabene
 9. *n*-Propyl Parabene



Column : Kaseisorb LC ODS-PH Super 4.6mm I.D. × 150mm
Mobile Phase : CH₃CN/50mmol/l KH₂PO₄+0.1% H₃PO₄=25/75
Detection : UV230nm
Flow Rate : 1.0ml/min
Temperature : 40°C