

Catecholamine

Mobile Phase: CH₃CN / 50mmol/l HCOONH₄(pH3.5)=70/30

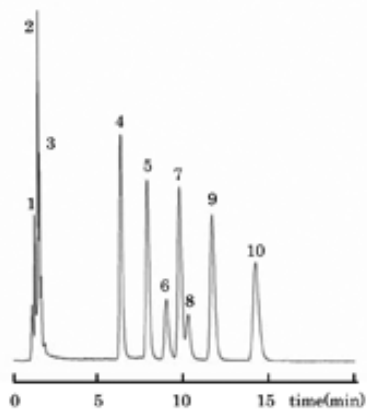
Detection : UV254nm

Flow Rate : 1.0ml/min

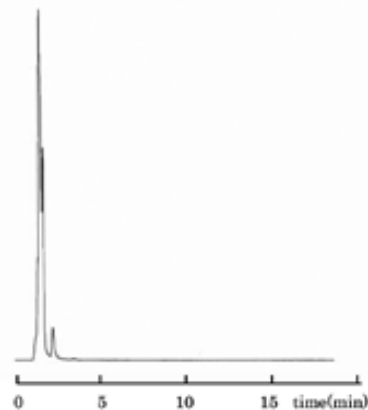
Temperature : 25°C

Sample : 1.VMA 2.DOPA 3.HVA 4.Noradrenaline 5.Adrenaline

6.Creatinine 7.Dopamine 8.Serotonin 9.Tyramine 10.Isoproterenol



Column:TCI Dual ODS-CX10
4.6mm I.D. x 150mm



Column:TCI Dual ODS-CX20
4.6mm I.D. x 150mm