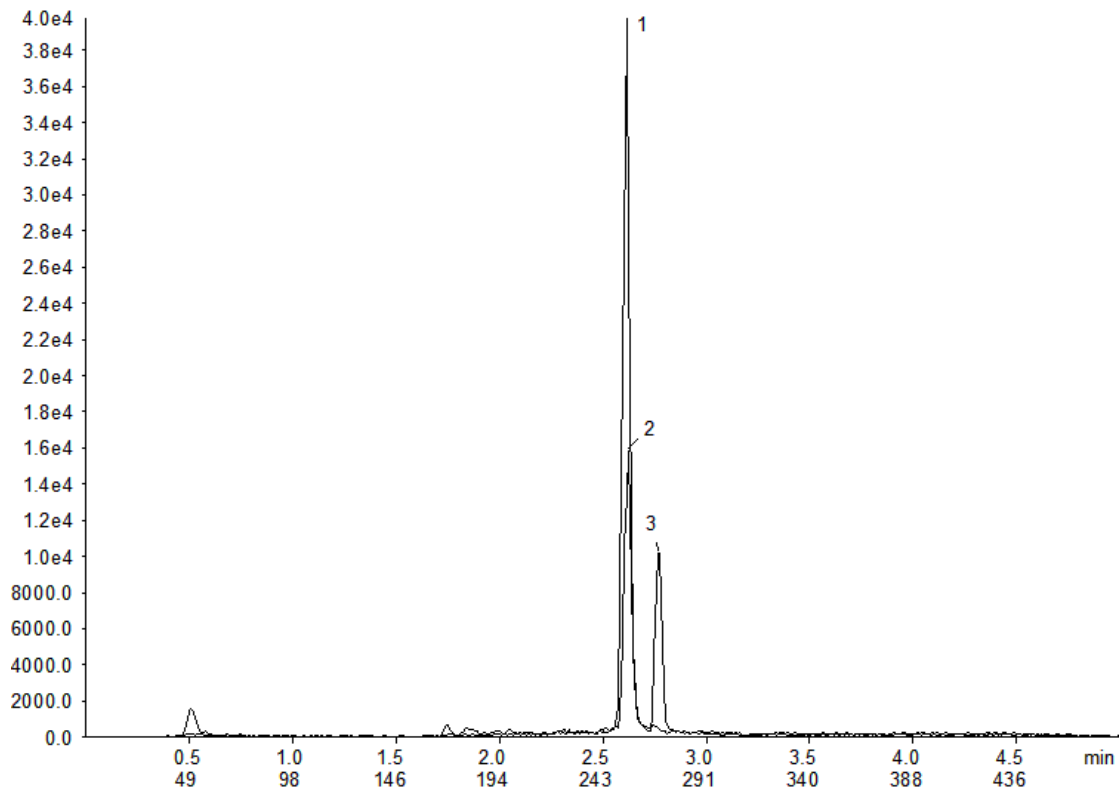


19761



Column: [Kinetex™ 1.7 µm C18 100 Å LC Column 30 x 2.1 mm](#)

Part No: [00A-4475-AN](#)

Dimensions: 30 x 2.1 mm ID

Elution Type: Gradient

Elution A: 0.1% Formic Acid +1 mM Amm Formate in Water

Elution B: 0.1% Formic Acid +1 mM Amm Formate in ACN

Gradient Profile:

Step No.	Time (min)	Pct A	Pct B
1	0	90	10
2	2.5	10	90
3	3.5	10	90
4	3.6	90	10

Flow Rate: 0.4 mL/min

Col. Temp: 55 °C

Detection: Mass Spectrometer (MS) @ amu (22°C)

Compounds:

- 1- Testosterone
- 2- Testosterone-d3
- 3- Epitestosterone