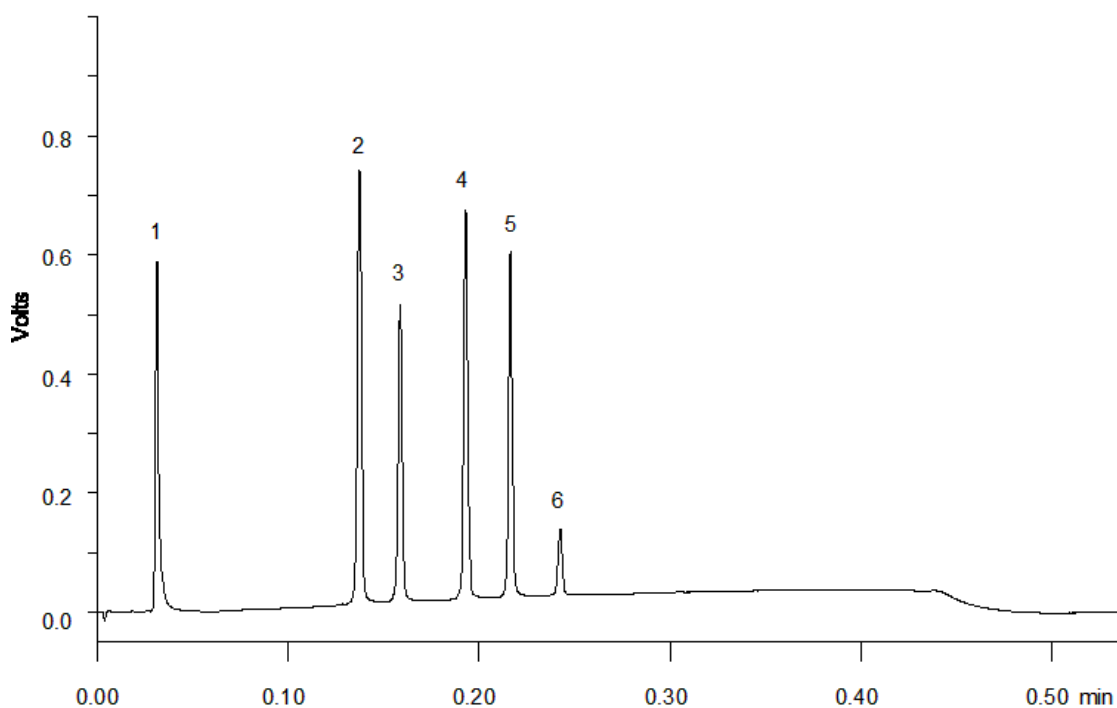


19803



Column: [Kinetex 1.7 \$\mu\$ m XB-C18 100 \$\text{\AA}\$ 30 x 2.1 mm LC Column](#)

Part No: [00A-4498-AN](#)

Dimensions: 30 x 2.1 mm ID

Elution Type: Gradient

Elution A: Water

Elution B: Acetonitrile

Gradient Profile:

Step No.	Time (min)	Pct A	Pct B
1	0	98	2
2	0.4	2	98
3	0.53	2	98

Flow Rate: 3 mL/min

Col. Temp: 80 $^{\circ}$ C

Detection: UV-Vis Abs.-Variable Wave.(UV) @ 254 nm (22 $^{\circ}$ C)

Compounds:

- 1- Uracil
- 2- Methyl Paraben
- 3- Acetophenone
- 4- Propyl Paraben
- 5- Butyl Paraben
- 6- Naphthalene