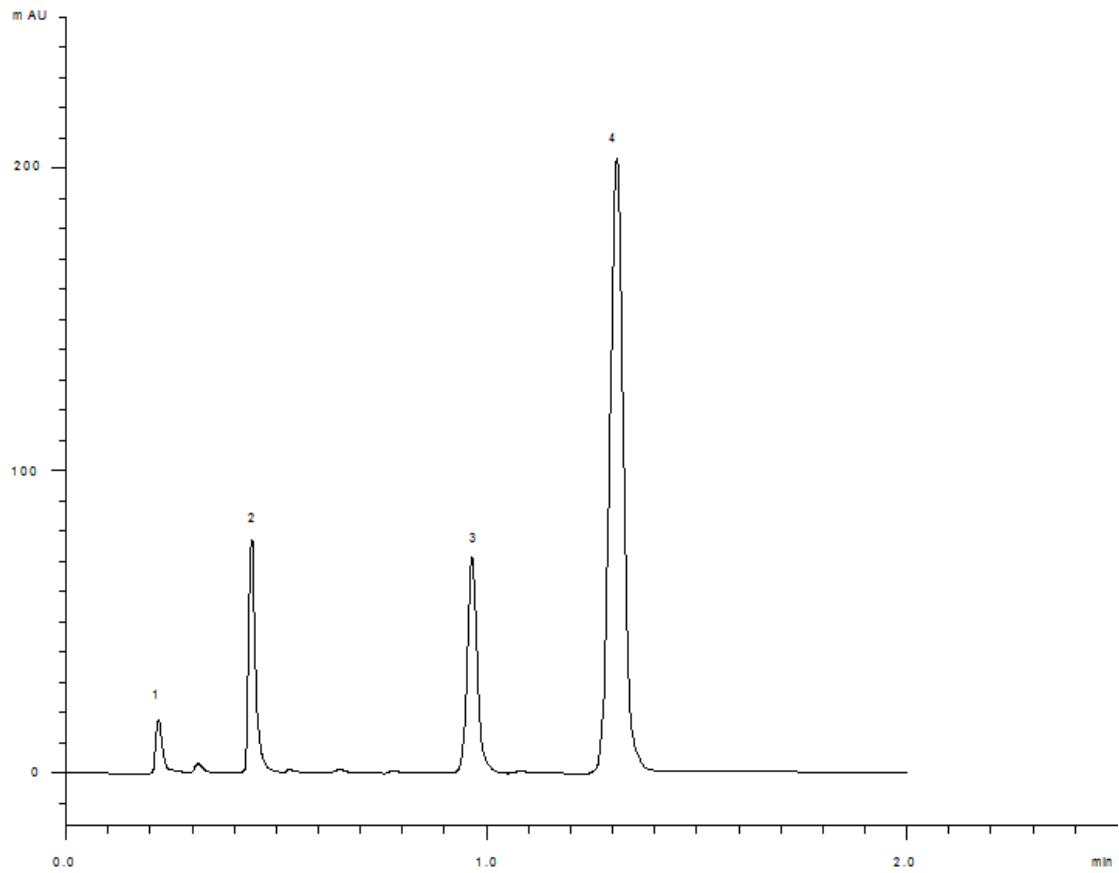


19549



**Column:** [Kinetex™ 2.6 μm XB-C18 100 Å LC Column 50 x 2.1 mm](#)

**Part No:** [00B-4496-AN](#)

**Dimensions:** 50 x 2.1 mm ID

**Elution Type:** Isocratic

**Elution A:** Water

**Elution B:** ACN

**Gradient Profile:**

Step No.	Time (min)	Pct A	Pct B
1	0	50	50

**Flow Rate:** 0.5 mL/min

**Col. Temp:** 30 °C

**Detection:** UV-Vis Abs.-Variable Wave.(UV) @ 254 nm (22°C)

**Compounds:**

- 1- Uracil
- 2- acetophenone
- 3- toluene
- 4- naphthalene