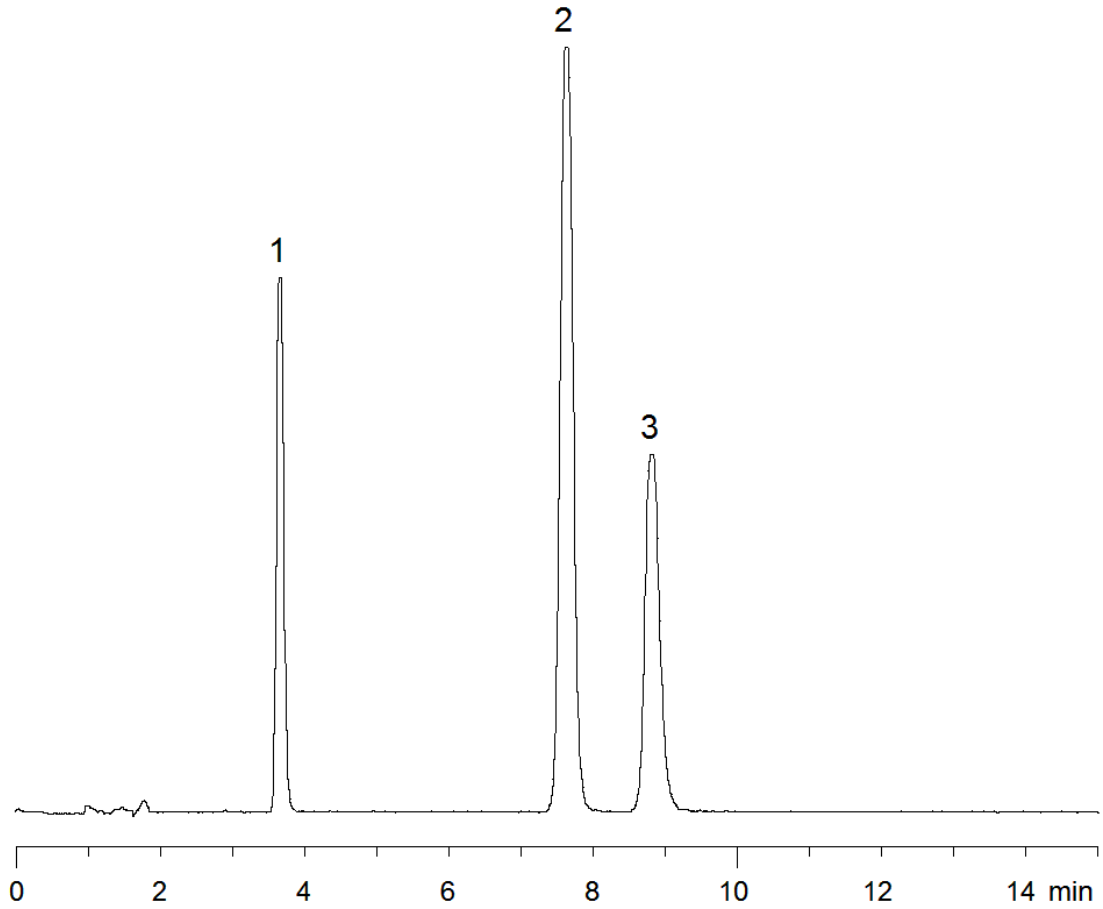


14999



**Column:** [Gemini® 5 µm C18 110 Å LC Column 150 x 4.6 mm](#)

**Part No:** [00F-4435-E0](#)

**Dimensions:** 150 x 4.6 mm ID

**Elution Type:** Isocratic

**Elution A:** 10mM NH<sub>4</sub>HCO<sub>3</sub>, pH 10.5

**Elution B:** Acetonitrile

**Gradient Profile:**

Step No.	Time (min)	Pct A	Pct B
1	0	50	50

**Flow Rate:** 1 mL/min

**Col. Temp:** 25 °C

**Detection:** UV-Vis Abs.-Variable Wave.(UV) @ 210 nm (25°C)

**Compounds:**

- 1- Procaine
- 2- Lidocaine
- 3- Tetracaine