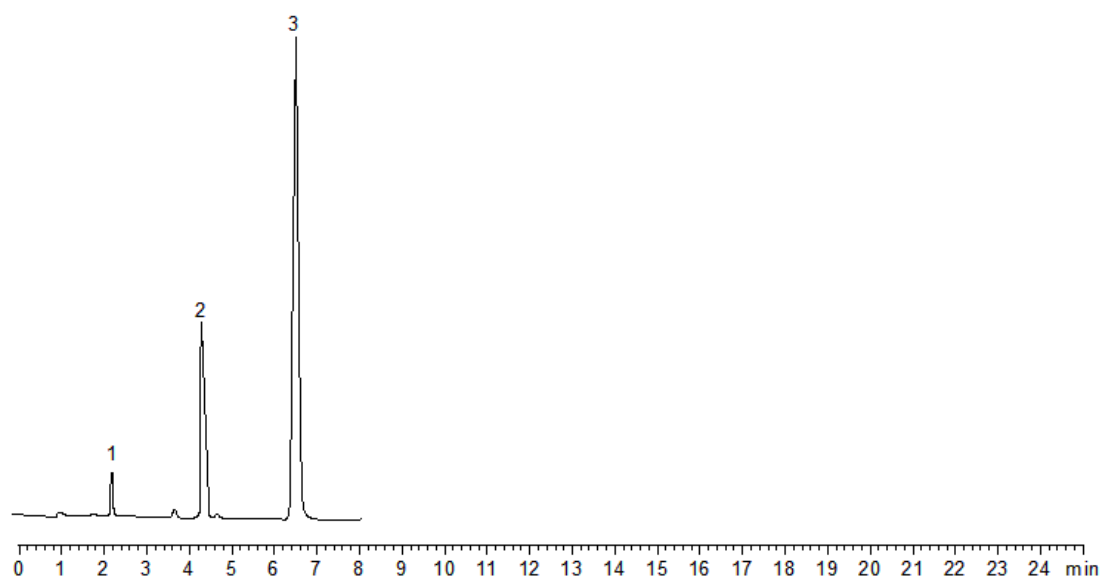


19966



Column: [Kinetex™ 2.6 µm C8 100 Å LC Column 100 x 2.1 mm](#)

Part No: [00D-4497-AN](#)

Dimensions: 100 x 2.1 mm ID

Elution Type: Isocratic

Elution A: 50:50 Acetonitrile:Water

Gradient Profile:

Step No.	Time (min)	Pct A
1	10	100

Flow Rate: 0.2 mL/min

Col. Temp: 25 °C

Detection: UV-Vis Abs. - Variable Wave. @ 200 nm (22°C)

Compounds:

1-Norethindrone

2-Progesterone

3-Mestranol