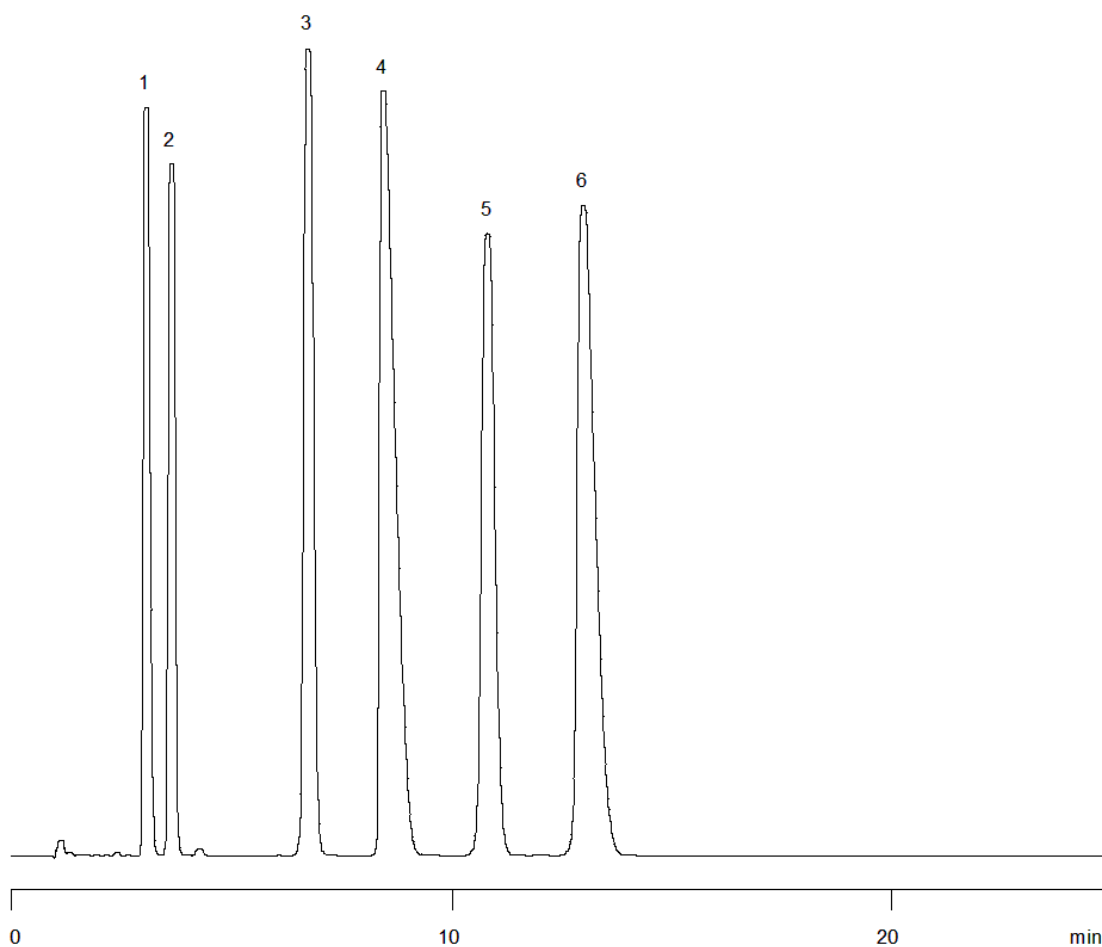


15000



**Column:** [Gemini® 5 µm C18 110 Å LC Column 150 x 4.6 mm](#)

**Part No:** [00F-4435-E0](#)

**Dimensions:** 150 x 4.6 mm ID

**Elution Type:** Isocratic

**Elution A:** 20mM Potassium Phosphast, pH 6.0

**Elution B:** Acetonitrile

**Gradient Profile:**

Step No.	Time (min)	Pct A	Pct B
1	0	70	30

**Flow Rate:** 1 mL/min

**Col. Temp:** 25 °C

**Detection:** UV-Vis Abs.-Variable Wave.(UV) @ 202 nm (25°C)

**Compounds:**

- 1- Tolmetin
- 2- Naproxen
- 3- Fenoprofen
- 4- Diflunisal
- 5- Indomethacin
- 6- Ibuprofen