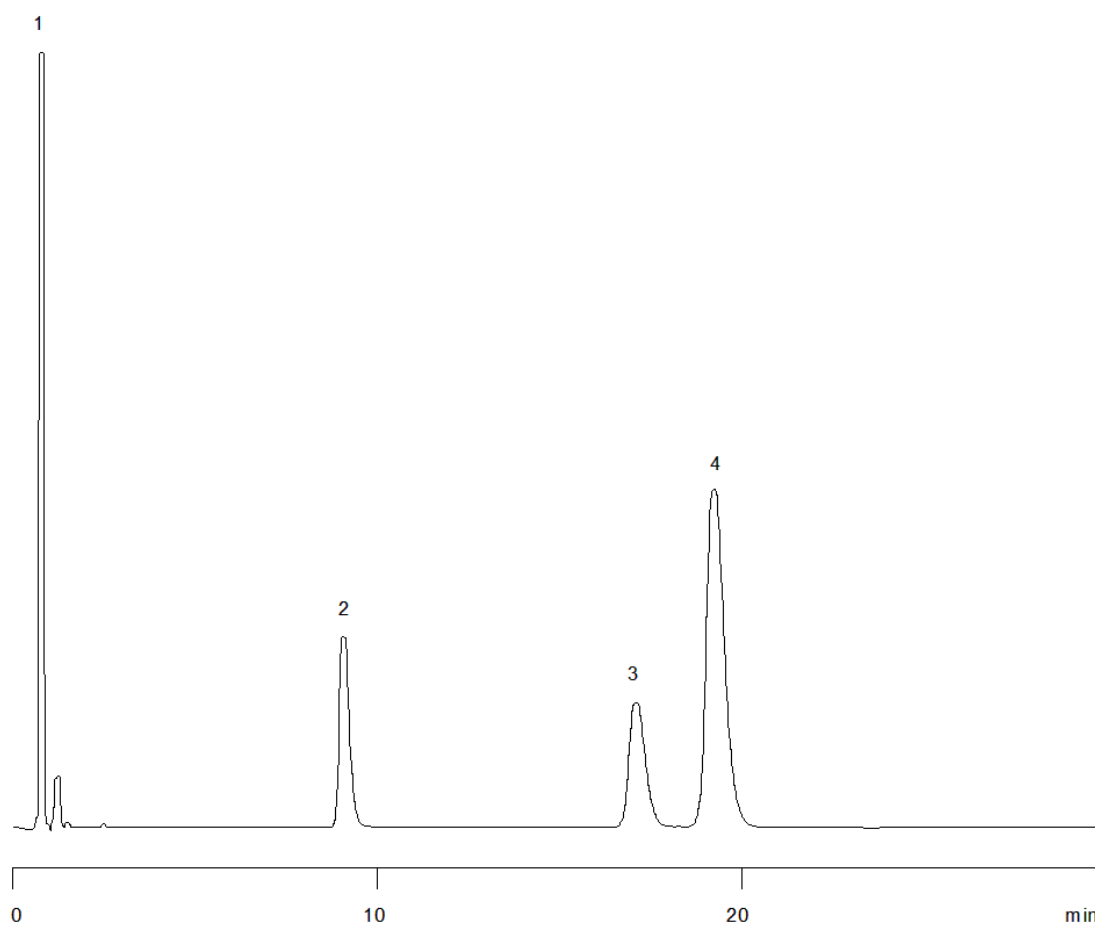


15011



Column: [Gemini® 5 µm C18 110 Å LC Column 150 x 4.6 mm](#)

Part No: [00F-4435-E0](#)

Dimensions: 150 x 4.6 mm ID

Elution Type: Isocratic

Elution A: 20mM NH₄HCO₃, pH 10.0

Elution B: Acetonitrile

Gradient Profile:

Step No.	Time (min)	Pct A	Pct B
1	0	60	40

Flow Rate: 1.5 mL/min

Col. Temp: 25 °C

Detection: UV-Vis Abs.-Variable Wave.(UV) @ 210 nm (25°C)

Compounds:

- 1- Maleic acid
- 2- Chlorpheniramine
- 3- Triprolidine
- 4- Diphenhydramine