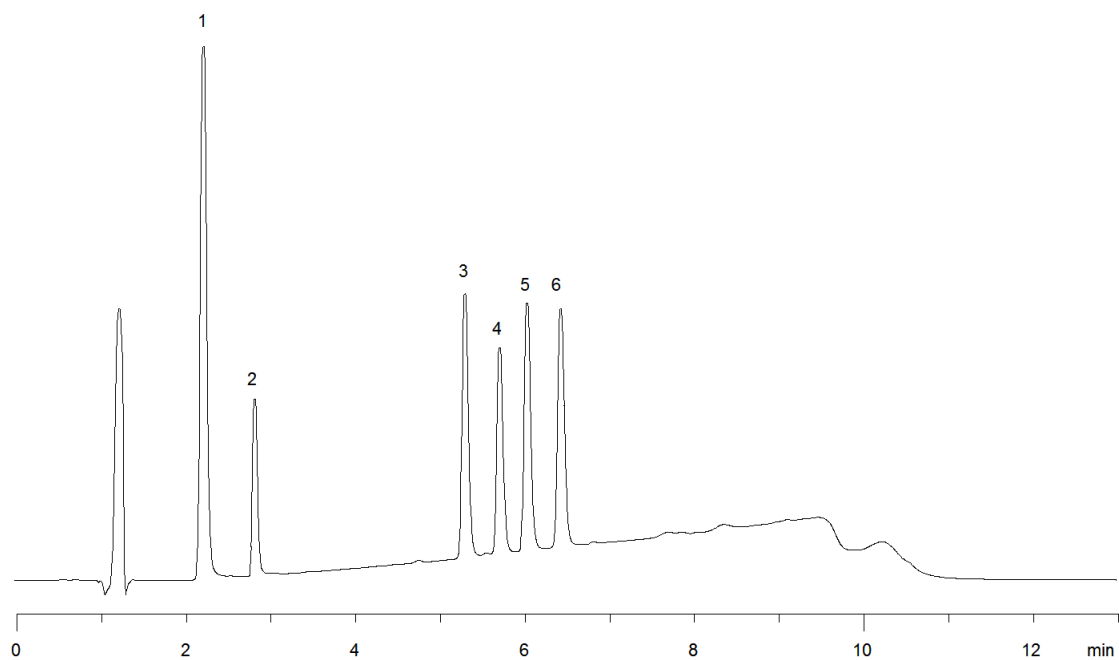


15456



**Column:** [Gemini® 5 µm C18 110 Å LC Column 150 x 3 mm](#)

**Part No:** [00F-4435-Y0](#)

**Dimensions:** 150 x 3 mm ID

**Elution Type:** Gradient

**Elution A:** 0.1% Formic acid in Water

**Elution B:** 0.1% Formic acid in Acetonitrile

**Gradient Profile:**

Step No.	Time (min)	Pct A	Pct B
1	0	80	20
2	8	20	80
3	9	20	80

**Flow Rate:** 0.8 mL/min

**Col. Temp:** ambient

**Detection:** UV-Vis Abs.-Variable Wave.(UV) @ 254 nm (22°C)

**Compounds:**

- 1- Chlordiazepoxide
- 2- Flurazepam
- 3- Oxazepam
- 4- Clonazepam
- 5- Temazepam
- 6- Diazepam