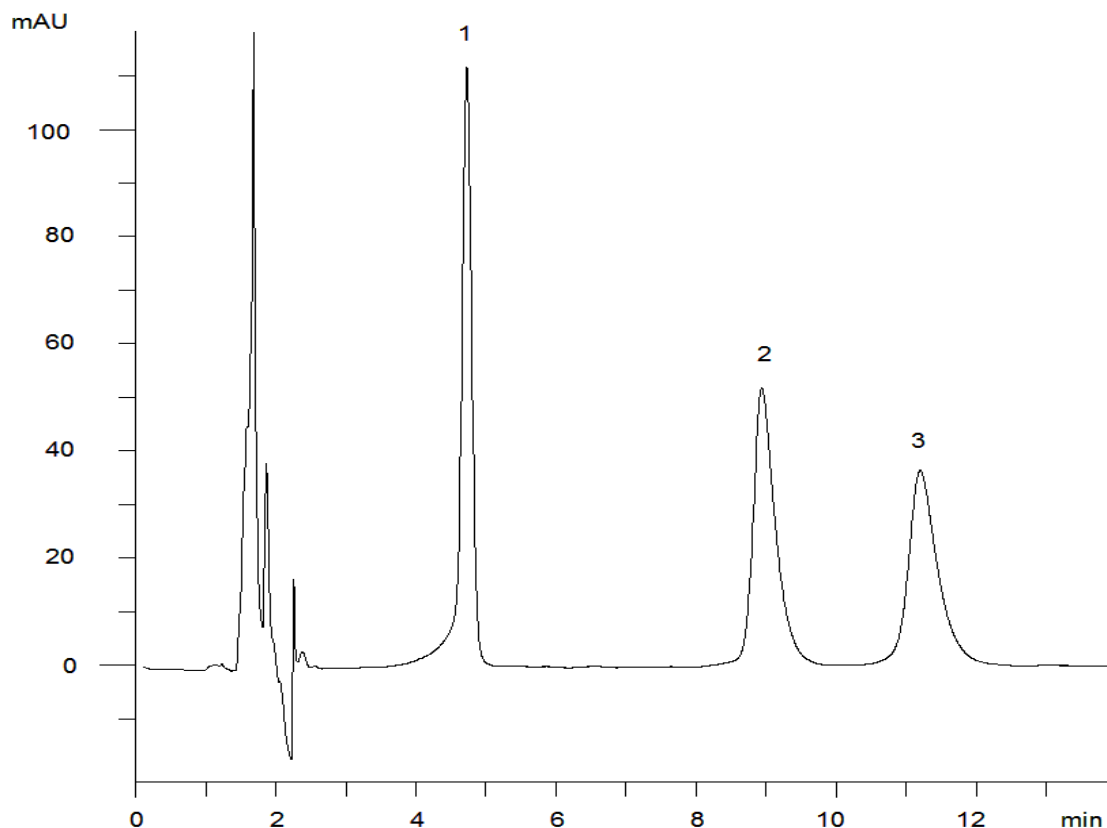


15690



**Column:** [Gemini® 5 µm C18 110 Å LC Column 150 x 4.6 mm](#)

**Part No:** [00F-4435-E0](#)

**Dimensions:** 150 x 4.6 mm ID

**Elution Type:** Isocratic

**Elution A:** 10mM NH<sub>4</sub>HCO<sub>3</sub>, pH 10.5

**Elution B:** Acetonitrile

**Gradient Profile:**

Step No.	Time (min)	Pct A	Pct B
1	0	80	20

**Flow Rate:** 1 mL/min

**Col. Temp:** ambient

**Detection:** UV-Vis Abs.-Variable Wave.(UV) @ 254 nm (22°C)

**Compounds:**

- 1- Phenylpropanolamine (aka norephedrine)
- 2- Ephedrine
- 3- Pseudoephedrine