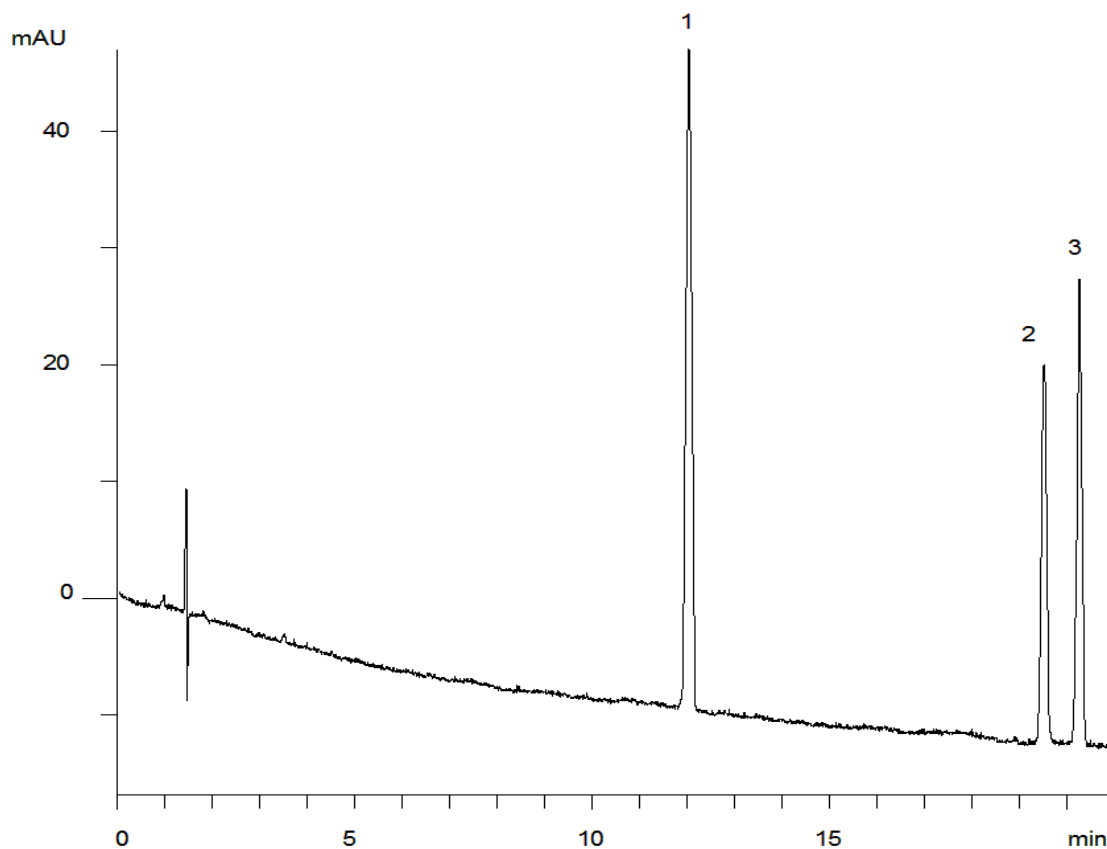


15693



Column: [Gemini® 5 µm C18 110 Å LC Column 150 x 4.6 mm](#)

Part No: [00F-4435-E0](#)

Dimensions: 150 x 4.6 mm ID

Elution Type: Gradient

Elution A: Water

Elution B: Acetonitrile

Gradient Profile:

Step No.	Time (min)	Pct A	Pct B
1	0	85	15
2	60	20	80

Flow Rate: 1.5 mL/min

Col. Temp: ambient

Detection: UV-Vis Abs.-Variable Wave.(UV) @ 205 nm (22°C)

Compounds:

- 1- Gensinoside-Re
- 2- Gensinoside-Rb1
- 3- Gensinoside-Rc