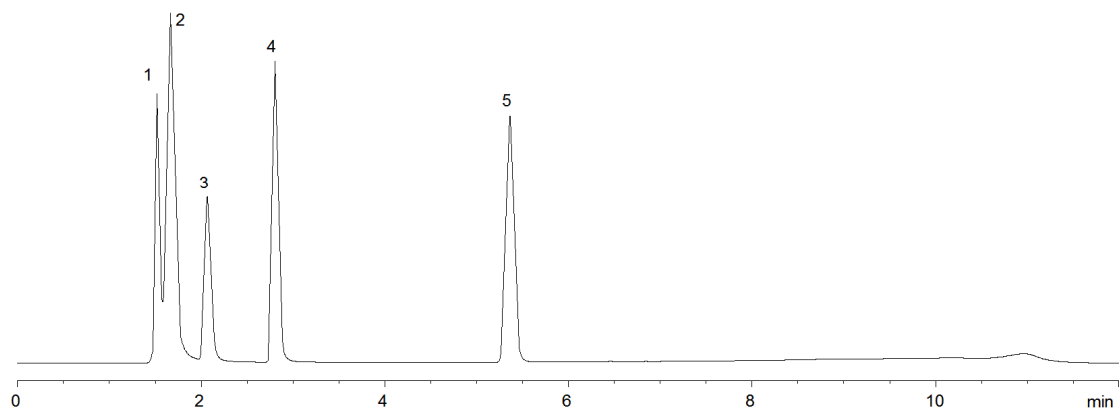


15758



**Column:** [Luna® 5 µm C18\(2\) 100 Å LC Column 150 x 4.6 mm](#)

**Part No:** [00F-4252-E0](#)

**Dimensions:** 150 x 4.6 mm ID

**Elution Type:** Gradient

**Elution A:** 20mM Ammonium acetate, pH 4.5

**Elution B:** Acetonitrile

**Gradient Profile:**

Step No.	Time (min)	Pct A	Pct B
1	0	97	3
2	10	60	40

**Flow Rate:** 1 mL/min

**Col. Temp:** ambient

**Detection:** UV-Vis Abs.-Variable Wave.(UV) @ 260 nm (22°C)

**Compounds:**

- 1- GTP
- 2- GDP
- 3- GMP
- 4- Guanine
- 5- Guanosine